

MAN1A1 Recombinant Matched Antibody Pair, PBS Only

Catalog Number: **MP02326-1**

Capture Antibody Information

Catalog Number:
86094-1-PBS
Host:
Rabbit
Isotype:
IgG
Purification Method:
Protein A purification

Clone ID:
250444H2
Reactivity:
human
GenBank:
BC065827
Immunogen Catalog Number:
Ag20060

Conjugate:
Unconjugated
Full name:
mannosidase, alpha, class 1A, member 1
Gene ID:
4121

Detection Antibody Information

Catalog Number:
86094-3-PBS
Host:
Rabbit
Isotype:
IgG
Purification Method:
Protein A purification

Clone ID:
250444F10
Reactivity:
human
GenBank:
BC065827
Immunogen Catalog Number:
Ag20060

Conjugate:
Unconjugated
Full name:
mannosidase, alpha, class 1A, member 1
Gene ID:
4121

Applications

Tested Applications:
Sandwich ELISA

Range:
78.1-5000 pg/mL (Sandwich ELISA)

Recommended Dilutions:
It is recommended that this reagent should be titrated in each testing system to obtain optimal results.

Product Information

MP02326-1 targets MAN1A1 in immunoassays as a matched antibody pair. Validated in Sandwich ELISA.

Capture antibody: MAN1A1 Recombinant antibody, PBS Only (Capture) 86094-1-PBS (250444H2). 100 µg. Concentration 1 mg/mL.

Detection antibody: MAN1A1 Recombinant antibody, PBS Only (Detector) 86094-3-PBS (250444F10). 100 µg. Concentration 1 mg/mL.

Unconjugated rabbit recombinant monoclonal antibody pair in PBS only storage buffer at a concentration of 1 mg/mL, ready for conjugation. Created using Proteintech's proprietary in-house recombinant technology. Recombinant production enables unrivalled batch-to-batch consistency, easy scale-up, and future security of supply.

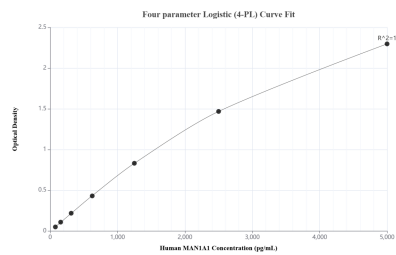
Matched antibody pairs are designed for use in a variety of assays and platforms that require matched antibody pairs.

Antibody use should be optimized for each application and assay.

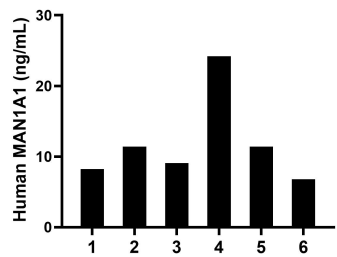
Storage

Storage:
Store at -80°C.
The product is shipped with ice packs. Upon receipt, store it immediately at -80°C
Storage buffer:
PBS only

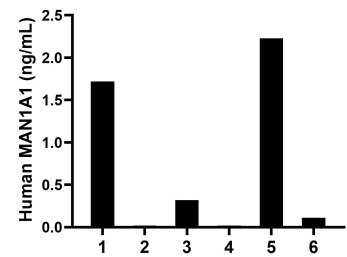
Selected Validation Data



Sandwich ELISA standard curve of MP02326-1, Human MAN1A1 Recombinant Matched Antibody Pair - PBS only. 86094-1-PBS was coated to a plate as the capture antibody and incubated with serial dilutions of standard Ag20060. 86094-3-PBS was HRP conjugated as the detection antibody. Range: 78.1-5000 pg/mL.



Serum of six individual healthy human donors was measured. The MAN1A1 concentration of detected samples was determined to be 11.9 ng/mL with a range of 6.8-24.2 ng/mL.



Urine of six individual healthy human donors was measured. The MAN1A1 concentration of detected samples was determined to be 0.7 ng/mL with a range of ND-2.2 ng/mL.