

For Research Use Only

LAMP2/ CD107b Recombinant Matched Antibody Pair, PBS Only



Catalog Number:MP02321-2

Capture Antibody Information

Catalog Number:
86269-5-PBS
Host:
Rabbit
Isotype:
IgG
Purification Method:
Protein A purification

Clone ID:
250948G6
Reactivity:
human
GenBank:
NM_002294.3
Immunogen Catalog Number:
Eg4998

Conjugate:
Unconjugated
Full name:
lysosomal-associated membrane protein 2
Gene ID:
3920

Detection Antibody Information

Catalog Number:
86269-4-PBS
Host:
Rabbit
Isotype:
IgG
Purification Method:
Protein A purification

Clone ID:
250948E6
Reactivity:
human
GenBank:
NM_002294.3
Immunogen Catalog Number:
Eg4998

Conjugate:
Unconjugated
Full name:
lysosomal-associated membrane protein 2
Gene ID:
3920

Applications

Tested Applications:
Sandwich ELISA

Range:
78.1-5000 pg/mL (Sandwich ELISA)

Recommended Dilutions:
It is recommended that this reagent should be titrated in each testing system to obtain optimal results.

Product Information

MP02321-2 targets LAMP2/ CD107b in immunoassays as a matched antibody pair. Validated in Sandwich ELISA.

Capture antibody: LAMP2/ CD107b Recombinant antibody, PBS Only (Capture) 86269-5-PBS (250948G6). 100 µg. Concentration 1 mg/mL.

Detection antibody: LAMP2/ CD107b Recombinant antibody, PBS Only (Detector) 86269-4-PBS (250948E6). 100 µg. Concentration 1 mg/mL.

Unconjugated rabbit recombinant monoclonal antibody pair in PBS only storage buffer at a concentration of 1 mg/mL, ready for conjugation. Created using Proteintech's proprietary in-house recombinant technology. Recombinant production enables unrivalled batch-to-batch consistency, easy scale-up, and future security of supply.

Matched antibody pairs are designed for use in a variety of assays and platforms that require matched antibody pairs.

Antibody use should be optimized for each application and assay.

Storage

Storage:
Store at -80°C.
The product is shipped with ice packs. Upon receipt, store it immediately at -80°C
Storage buffer:
PBS only

For technical support and original validation data for this product please contact:

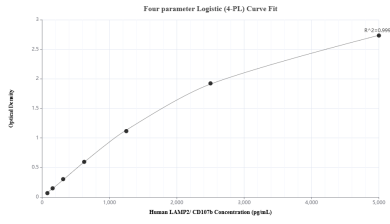
T: 4006900926

E: Proteintech-CN@ptglab.com

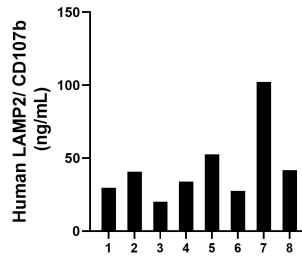
W: ptgcn.com

This product is exclusively available under Proteintech Group brand and is not available to purchase from any other manufacturer.

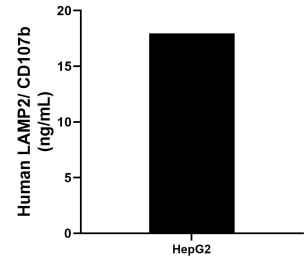
Selected Validation Data



Sandwich ELISA standard curve of MP02321-2, Human LAMP2/ CD107b Recombinant Matched Antibody Pair - PBS only. 86269-5-PBS was coated to a plate as the capture antibody and incubated with serial dilutions of standard Eg4998. 86269-4-PBS was HRP conjugated as the detection antibody. Range: 78.1-5000 pg/mL



Plasma of eight individual healthy human donors was measured. The human LAMP2/ CD107b concentration of detected samples was determined to be 43.54 ng/mL with a range of 20.21 - 102.18 ng/mL.



The mean LAMP2/ CD107b concentration was determined to be 17.96 ng/mL in HepG2 cell extract based on a 1.3 mg/mL extract load.