

KIFC1 Recombinant Matched Antibody Pair, PBS Only

Catalog Number: MP02316-1

Capture Antibody Information

Catalog Number: 85981-4-PBS	Clone ID: 250588B8	Conjugate: Unconjugated
Host: Rabbit	Reactivity: human	Full name: kinesin family member C1
Isotype: IgG	GenBank: BC000712	Gene ID: 3833
Purification Method: Protein A purification	Immunogen Catalog Number: Ag14492	

Detection Antibody Information

Catalog Number: 85981-3-PBS	Clone ID: 250588E4	Conjugate: Unconjugated
Host: Rabbit	Reactivity: human	Full name: kinesin family member C1
Isotype: IgG	GenBank: BC000712	Gene ID: 3833
Purification Method: Protein A purification	Immunogen Catalog Number: Ag14492	

Applications

Tested Applications: Sandwich ELISA	Range: 0.313-20 ng/mL (Sandwich ELISA)	Recommended Dilutions: It is recommended that this reagent should be titrated in each testing system to obtain optimal results.
---	--	---

Product Information

MP02316-1 targets KIFC1 in immunoassays as a matched antibody pair. Validated in Sandwich ELISA.

Capture antibody: KIFC1 Recombinant antibody, PBS Only (Capture) 85981-4-PBS (250588B8). 100 µg. Concentration 1 mg/mL.

Detection antibody: KIFC1 Recombinant antibody, PBS Only (Detector) 85981-3-PBS (250588E4). 100 µg. Concentration 1 mg/mL.

Unconjugated rabbit recombinant monoclonal antibody pair in PBS only storage buffer at a concentration of 1 mg/mL, ready for conjugation. Created using Proteintech's proprietary in-house recombinant technology. Recombinant production enables unrivalled batch-to-batch consistency, easy scale-up, and future security of supply.

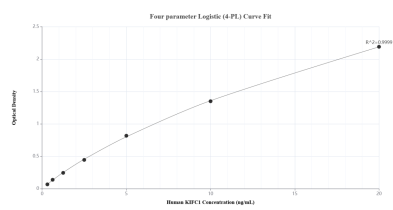
Matched antibody pairs are designed for use in a variety of assays and platforms that require matched antibody pairs.

Antibody use should be optimized for each application and assay.

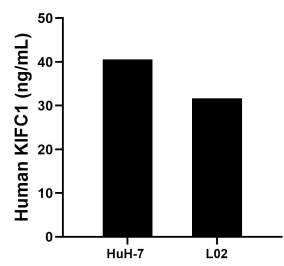
Storage

Storage:
Store at -80°C.
The product is shipped with ice packs. Upon receipt, store it immediately at -80°C
Storage buffer:
PBS only

Selected Validation Data



Sandwich ELISA standard curve of MP02316-1, Human KIFC1 Recombinant Matched Antibody Pair - PBS only. 85981-4-PBS was coated to a plate as the capture antibody and incubated with serial dilutions of standard Ag14492. 85981-3-PBS was HRP conjugated as the detection antibody. Range: 0.313-20 ng/mL.



The mean KIFC1 concentration was determined to be 40.55 ng/mL in HuH-7 cell extract based on a 1.40 mg/mL extract load and 31.65 ng/mL in L02 cell extract based on a 1.30 mg/mL extract load.