

Tie2 Recombinant Matched Antibody Pair, PBS Only

Catalog Number: **MP02315-1**

Capture Antibody Information

Catalog Number:
86010-4-PBS
Host:
Rabbit
Isotype:
IgG
Purification Method:
Protein A purification

Clone ID:
250234H6
Reactivity:
human
GenBank:
BC035514
Immunogen Catalog Number:
Eg3367

Conjugate:
Unconjugated
Full name:
TEK tyrosine kinase, endothelial
Gene ID:
7010

Detection Antibody Information

Catalog Number:
86010-3-PBS
Host:
Rabbit
Isotype:
IgG
Purification Method:
Protein A purification

Clone ID:
250234B4
Reactivity:
human
GenBank:
BC035514
Immunogen Catalog Number:
Eg3367

Conjugate:
Unconjugated
Full name:
TEK tyrosine kinase, endothelial
Gene ID:
7010

Applications

Tested Applications:
Sandwich ELISA

Range:
0.625-40 ng/mL (Sandwich ELISA)

Recommended Dilutions:
It is recommended that this reagent should be titrated in each testing system to obtain optimal results.

Product Information

MP02315-1 targets Tie2 in immunoassays as a matched antibody pair. Validated in Sandwich ELISA.

Capture antibody: TEK Recombinant antibody, PBS Only (Capture) 86010-4-PBS (250234H6). 100 μ g. Concentration 1 mg/mL.

Detection antibody: TEK Recombinant antibody, PBS Only (Detector) 86010-3-PBS (250234B4). 100 μ g. Concentration 1 mg/mL.

Unconjugated rabbit recombinant monoclonal antibody pair in PBS only storage buffer at a concentration of 1 mg/mL, ready for conjugation. Created using Proteintech's proprietary in-house recombinant technology. Recombinant production enables unrivalled batch-to-batch consistency, easy scale-up, and future security of supply.

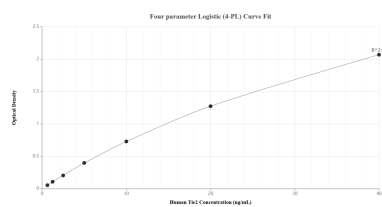
Matched antibody pairs are designed for use in a variety of assays and platforms that require matched antibody pairs.

Antibody use should be optimized for each application and assay.

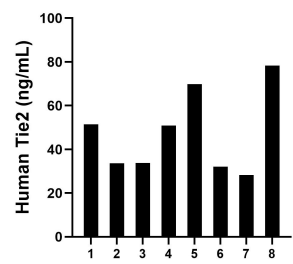
Storage

Storage:
Store at -80°C.
The product is shipped with ice packs. Upon receipt, store it immediately at -80°C
Storage buffer:
PBS only

Selected Validation Data



Sandwich ELISA standard curve of MP02315-1, Human Tie2 Recombinant Matched Antibody Pair - PBS only. 86010-4-PBS was coated to a plate as the capture antibody and incubated with serial dilutions of standard Eg3367. 86010-3-PBS was HRP conjugated as the detection antibody. Range: 0.625-40 ng/mL



Serum of eight individual healthy human donors was measured. The Tie2 concentration of detected samples was determined to be 45.29 ng/mL with a range of 28.30-78.29 ng/mL.