

# PSMC1 Recombinant Matched Antibody Pair, PBS Only

Catalog Number: **MP02311-1**

## Capture Antibody Information

<b>Catalog Number:</b> 86237-3-PBS	<b>Clone ID:</b> 251014F11	<b>Conjugate:</b> Unconjugated
<b>Host:</b> Rabbit	<b>Reactivity:</b> human	<b>Full name:</b> proteasome (prosome, macropain)
<b>Isotype:</b> IgG	<b>GenBank:</b> BC016368	<b>26S subunit, ATPase, 1</b>
<b>Purification Method:</b> Protein A purification	<b>Immunogen Catalog Number:</b> Ag1677	<b>Gene ID:</b> 5700

## Detection Antibody Information

<b>Catalog Number:</b> 86237-2-PBS	<b>Clone ID:</b> 251014D12	<b>Conjugate:</b> Unconjugated
<b>Host:</b> Rabbit	<b>Reactivity:</b> human	<b>Full name:</b> proteasome (prosome, macropain)
<b>Isotype:</b> IgG	<b>GenBank:</b> BC016368	<b>26S subunit, ATPase, 1</b>
<b>Purification Method:</b> Protein A purification	<b>Immunogen Catalog Number:</b> Ag1677	<b>Gene ID:</b> 5700

## Applications

<b>Tested Applications:</b> Cytometric bead array	<b>Range:</b> 0.156-20 ng/mL (Cytometric Bead Array)	<b>Recommended Dilutions:</b> It is recommended that this reagent should be titrated in each testing system to obtain optimal results.
--	---	---

## Product Information

MP02311-1 targets PSMC1 in immunoassays as a matched antibody pair. Validated in Cytometric bead array.

Capture antibody: PSMC1 Recombinant antibody, PBS Only (Capture) 86237-3-PBS (251014F11). 100 µg. Concentration 1 mg/mL.

Detection antibody: PSMC1 Recombinant antibody, PBS Only (Detector) 86237-2-PBS (251014D12). 100 µg. Concentration 1 mg/mL.

Unconjugated rabbit recombinant monoclonal antibody pair in PBS only storage buffer at a concentration of 1 mg/mL, ready for conjugation. Created using Proteintech's proprietary in-house recombinant technology. Recombinant production enables unrivalled batch-to-batch consistency, easy scale-up, and future security of supply.

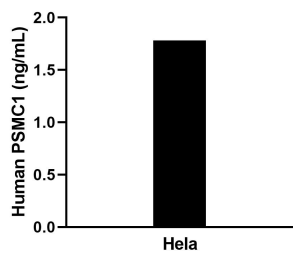
Matched antibody pairs are designed for use in a variety of assays and platforms that require matched antibody pairs.

Antibody use should be optimized for each application and assay.

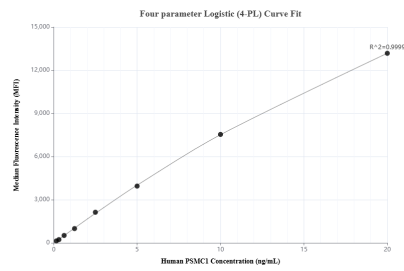
## Storage

**Storage:**  
Store at -80°C.  
**The product is shipped with ice packs. Upon receipt, store it immediately at -80°C**  
**Storage buffer:**  
PBS only

## Selected Validation Data



The mean PSMC1 concentration was determined to be 1.8 ng/mL in HeLa cell extract based on a 0.9 mg/mL extract load.



Cytometric bead array standard curve of MP02311-1, PSMC1 Recombinant Matched Antibody Pair, PBS Only. Capture antibody: 86237-3-PBS. Detection antibody: 86237-2-PBS. Standard: Ag1677. Range: 0.156-20 ng/mL.