

For Research Use Only

Complement C6 Recombinant Matched Antibody Pair, PBS Only



Catalog Number:MP02310-2

Capture Antibody Information

Catalog Number:
86286-2-PBS
Host:
Rabbit
Isotype:
IgG
Purification Method:
Protein A purification

Clone ID:
250971H5
Reactivity:
human
GenBank:
BC035723
Immunogen Catalog Number:
Eg4529

Conjugate:
Unconjugated
Full name:
complement component 6
Gene ID:
729

Detection Antibody Information

Catalog Number:
86286-4-PBS
Host:
Rabbit
Isotype:
IgG
Purification Method:
Protein A purification

Clone ID:
250971E10
Reactivity:
human
GenBank:
BC035723
Immunogen Catalog Number:
Eg4529

Conjugate:
Unconjugated
Full name:
complement component 6
Gene ID:
729

Applications

Tested Applications:
Sandwich ELISA

Range:
39.1-2500 pg/mL (Sandwich ELISA)

Recommended Dilutions:
It is recommended that this reagent should be titrated in each testing system to obtain optimal results.

Product Information

MP02310-2 targets Complement C6 in immunoassays as a matched antibody pair. Validated in Sandwich ELISA.

Capture antibody: Complement C6 Recombinant antibody, PBS Only (Capture) 86286-2-PBS (250971H5). 100 µg. Concentration 1 mg/mL.

Detection antibody: Complement C6 Recombinant antibody, PBS Only (Detector) 86286-4-PBS (250971E10). 100 µg. Concentration 1 mg/mL.

Unconjugated rabbit recombinant monoclonal antibody pair in PBS only storage buffer at a concentration of 1 mg/mL, ready for conjugation. Created using Proteintech's proprietary in-house recombinant technology. Recombinant production enables unrivalled batch-to-batch consistency, easy scale-up, and future security of supply.

Matched antibody pairs are designed for use in a variety of assays and platforms that require matched antibody pairs.

Antibody use should be optimized for each application and assay.

Storage

Storage:
Store at -80°C.
The product is shipped with ice packs. Upon receipt, store it immediately at -80°C
Storage buffer:
PBS only

For technical support and original validation data for this product please contact:

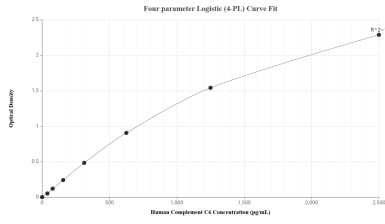
T: 4006900926

E: Proteintech-CN@ptglab.com

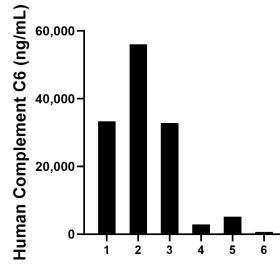
W: ptgcn.com

This product is exclusively available under Proteintech Group brand and is not available to purchase from any other manufacturer.

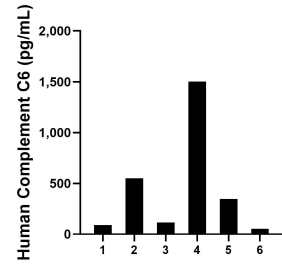
Selected Validation Data



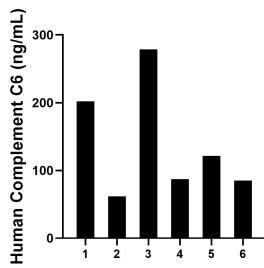
Sandwich ELISA standard curve of MP02310-2, Human Complement C6 Recombinant Matched Antibody Pair - PBS only. 86286-2-PBS was coated to a plate as the capture antibody and incubated with serial dilutions of standard Eg4529. 86286-4-PBS was HRP conjugated as the detection antibody. Range: 39.1-2500 pg/mL



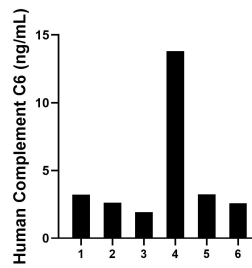
Serum of six individual healthy human donors was measured. The Complement C6 concentration of detected samples was determined to be 21,824.0 ng/mL with a range of 676.5-56,025.2 ng/mL



Urine of six individual healthy human donors was measured. The Complement C6 concentration of detected samples was determined to be 443.1 pg/mL with a range of 54.8-1,501.2 pg/mL



Human milk of six individual healthy female donors was measured. The Complement C6 concentration of detected samples was determined to be 139.3 ng/mL with a range of 61.9-278.6 ng/mL



Saliva of six individual healthy female donors was measured. The Complement C6 concentration of detected samples was determined to be 4.6 ng/mL with a range of 1.9-13.8 ng/mL