

Complement C6 Recombinant Matched Antibody Pair, PBS Only

Catalog Number: **MP02310-1**

Capture Antibody Information

Catalog Number: 86286-2-PBS	Clone ID: 250971H5	Conjugate: Unconjugated
Host: Rabbit	Reactivity: human	Full name: complement component 6
Isotype: IgG	GenBank: BC035723	Gene ID: 729
Purification Method: Protein A purification	Immunogen Catalog Number: Eg4529	

Detection Antibody Information

Catalog Number: 86286-1-PBS	Clone ID: 250971G12	Conjugate: Unconjugated
Host: Rabbit	Reactivity: human	Full name: complement component 6
Isotype: IgG	GenBank: BC035723	Gene ID: 729
Purification Method: Protein A purification	Immunogen Catalog Number: Eg4529	

Applications

Tested Applications: Cytometric bead array	Range: 0.313-40 ng/mL (Cytometric Bead Array)	Recommended Dilutions: It is recommended that this reagent should be titrated in each testing system to obtain optimal results.
--	---	---

Product Information

MP02310-1 targets Complement C6 in immunoassays as a matched antibody pair. Validated in Cytometric bead array.

Capture antibody: Complement C6 Recombinant antibody, PBS Only (Capture) 86286-2-PBS (250971H5). 100 µg. Concentration 1 mg/mL.

Detection antibody: Complement C6 Recombinant antibody, PBS Only (Detector) 86286-1-PBS (250971G12). 100 µg. Concentration 1 mg/mL.

Unconjugated rabbit recombinant monoclonal antibody pair in PBS only storage buffer at a concentration of 1 mg/mL, ready for conjugation. Created using Proteintech's proprietary in-house recombinant technology. Recombinant production enables unrivalled batch-to-batch consistency, easy scale-up, and future security of supply.

Matched antibody pairs are designed for use in a variety of assays and platforms that require matched antibody pairs.

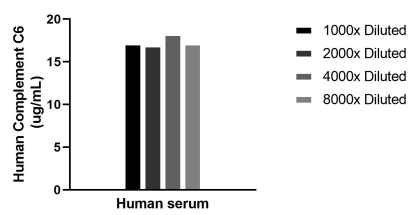
Antibody use should be optimized for each application and assay.

Storage

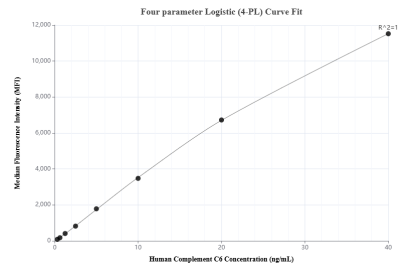
Storage:
Store at -80°C.
The product is shipped with ice packs. Upon receipt, store it immediately at -80°C

Storage buffer:
PBS only

Selected Validation Data



The mean Complement C6 concentration was determined to be 17.3 ug/mL in human serum.



Cytometric bead array standard curve of MP02310-1, Complement C6 Recombinant Matched Antibody Pair, PBS Only. Capture antibody: 86286-2-PBS. Detection antibody: 86286-1-PBS. Standard: Eg4529. Range: 0.313-40 ng/mL.