

TORC1/CRTC1 Recombinant Matched Antibody Pair, PBS Only

Catalog Number: MP02309-1

Capture Antibody Information

Catalog Number:
86226-1-PBS

Host:
Rabbit

Isotype:
IgG

Purification Method:
Protein A purification

Clone ID:
250870B12

Reactivity:
human

GenBank:
BC028050

Immunogen Catalog Number:
Ag0693

Conjugate:
Unconjugated

Full name:
CREB regulated transcription coactivator 1

Gene ID:
23373

Detection Antibody Information

Catalog Number:
86226-2-PBS

Host:
Rabbit

Isotype:
IgG

Purification Method:
Protein A purification

Clone ID:
250870F5

Reactivity:
human

GenBank:
BC028050

Immunogen Catalog Number:
Ag0693

Conjugate:
Unconjugated

Full name:
CREB regulated transcription coactivator 1

Gene ID:
23373

Applications

Tested Applications:
Cytometric bead array

Range:
0.781-100 ng/mL (Cytometric Bead Array)

Recommended Dilutions:
It is recommended that this reagent should be titrated in each testing system to obtain optimal results.

Product Information

MP02309-1 targets TORC1/CRTC1 in immunoassays as a matched antibody pair. Validated in Cytometric bead array.

Capture antibody: TORC1 Recombinant antibody, PBS Only (Capture) 86226-1-PBS (250870B12). 100 µg. Concentration 1 mg/mL.

Detection antibody: TORC1 Recombinant antibody, PBS Only (Detector) 86226-2-PBS (250870F5). 100 µg. Concentration 1 mg/mL.

Unconjugated rabbit recombinant monoclonal antibody pair in PBS only storage buffer at a concentration of 1 mg/mL, ready for conjugation. Created using Proteintech's proprietary in-house recombinant technology. Recombinant production enables unrivalled batch-to-batch consistency, easy scale-up, and future security of supply.

Matched antibody pairs are designed for use in a variety of assays and platforms that require matched antibody pairs.

Antibody use should be optimized for each application and assay.

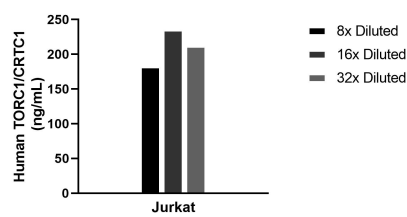
Storage

Storage:
Store at -80°C.

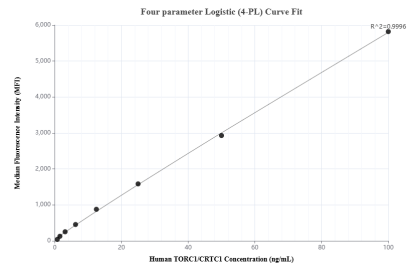
The product is shipped with ice packs. Upon receipt, store it immediately at -80°C

Storage buffer:
PBS only

Selected Validation Data



The mean TORC1/CRTC1 concentration was determined to be 209.6 ng/mL in Jurkat cell extract based on a 2.2 mg/mL extract load.



Cytometric bead array standard curve of MP02309-1, TORC1/CRTC1 Recombinant Matched Antibody Pair, PBS Only. Capture antibody: 86226-1-PBS. Detection antibody: 86226-2-PBS. Standard: Ag0693. Range: 0.781-100 ng/mL.