

MVD Recombinant Matched Antibody Pair, PBS Only

Catalog Number: **MP02298-2**

Capture Antibody Information

Catalog Number:
86220-2-PBS
Host:
Rabbit
Isotype:
IgG
Purification Method:
Protein A purification

Clone ID:
250853E11
Reactivity:
human
GenBank:
BC000011
Immunogen Catalog Number:
Ag7255

Conjugate:
Unconjugated
Full name:
mevalonate (diphospho)
decarboxylase
Gene ID:
4597

Detection Antibody Information

Catalog Number:
86220-3-PBS
Host:
Rabbit
Isotype:
IgG
Purification Method:
Protein A purification

Clone ID:
250853A3
Reactivity:
human
GenBank:
BC000011
Immunogen Catalog Number:
Ag7255

Conjugate:
Unconjugated
Full name:
mevalonate (diphospho)
decarboxylase
Gene ID:
4597

Applications

Tested Applications:
Sandwich ELISA

Range:
1.56-100 ng/mL (Sandwich ELISA)

Recommended Dilutions:
It is recommended that this reagent should be titrated in each testing system to obtain optimal results.

Product Information

MP02298-2 targets MVD in immunoassays as a matched antibody pair. Validated in Sandwich ELISA.

Capture antibody: MVD Recombinant monoclonal antibody, PBS Only (Capture) 86220-2-PBS (250853E11). 100 µg. Concentration 1 mg/mL.

Detection antibody: MVD Recombinant monoclonal antibody, PBS Only (Detector) 86220-3-PBS (250853A3). 100 µg. Concentration 1 mg/mL.

Unconjugated rabbit recombinant monoclonal antibody pair in PBS only storage buffer at a concentration of 1 mg/mL, ready for conjugation. Created using Proteintech's proprietary in-house recombinant technology. Recombinant production enables unrivalled batch-to-batch consistency, easy scale-up, and future security of supply.

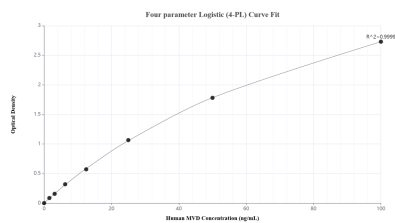
Matched antibody pairs are designed for use in a variety of assays and platforms that require matched antibody pairs.

Antibody use should be optimized for each application and assay.

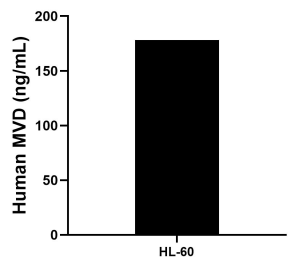
Storage

Storage:
Store at -80°C.
The product is shipped with ice packs. Upon receipt, store it immediately at -80°C
Storage buffer:
PBS only

Selected Validation Data



Sandwich ELISA standard curve of MP02298-2, Human MVD Recombinant Matched Antibody Pair - PBS only. 86220-2-PBS was coated to a plate as the capture antibody and incubated with serial dilutions of standard Ag7255. 86220-3-PBS was HRP conjugated as the detection antibody. Range: 1.56-100 ng/mL.



The mean MVD concentration was determined to be 178.14 ng/mL in HL-60 cell extract based on a 1.30 mg/mL extract load.