

# TGF beta 1 Recombinant Matched Antibody Pair, PBS Only

Catalog Number: **MP02288-2**

## Capture Antibody Information

Catalog Number:  
81746-7-PBS  
Host:  
Rabbit  
Isotype:  
IgG  
Purification Method:  
Protein A purification

Clone ID:  
250119D9  
Reactivity:  
human  
GenBank:  
Immunogen Catalog Number:  
Eg0879

Conjugate:  
Unconjugated  
Full name:  
transforming growth factor, beta 1  
Gene ID:  
7040

## Detection Antibody Information

Catalog Number:  
81746-6-PBS  
Host:  
Rabbit  
Isotype:  
IgG  
Purification Method:  
Protein A purification

Clone ID:  
250119E8  
Reactivity:  
human  
GenBank:  
Immunogen Catalog Number:  
Eg0879

Conjugate:  
Unconjugated  
Full name:  
transforming growth factor, beta 1  
Gene ID:  
7040

## Applications

Tested Applications:  
Sandwich ELISA

Range:  
31.25-2000 pg/mL (Sandwich ELISA)

Recommended Dilutions:  
It is recommended that this reagent should be titrated in each testing system to obtain optimal results.

## Product Information

MP02288-2 targets TGF beta 1 in immunoassays as a matched antibody pair. Validated in Sandwich ELISA.

Capture antibody: TGFB1 Recombinant antibody, PBS Only (Capture) 81746-7-PBS (250119D9). 100 µg. Concentration 1 mg/mL.

Detection antibody: TGFB1 Recombinant antibody, PBS Only (Detector) 81746-6-PBS (250119E8). 100 µg. Concentration 1 mg/mL.

Unconjugated rabbit recombinant monoclonal antibody pair in PBS only storage buffer at a concentration of 1 mg/mL, ready for conjugation. Created using Proteintech's proprietary in-house recombinant technology. Recombinant production enables unrivalled batch-to-batch consistency, easy scale-up, and future security of supply.

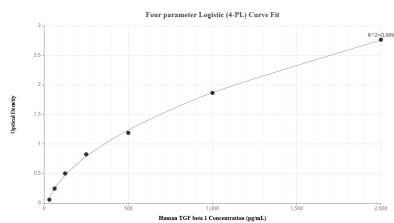
Matched antibody pairs are designed for use in a variety of assays and platforms that require matched antibody pairs.

Antibody use should be optimized for each application and assay.

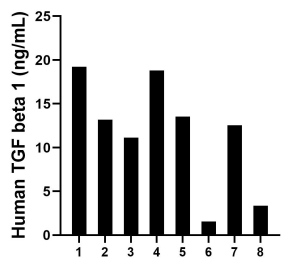
## Storage

Storage:  
Store at -80°C.  
The product is shipped with ice packs. Upon receipt, store it immediately at -80°C  
Storage buffer:  
PBS only

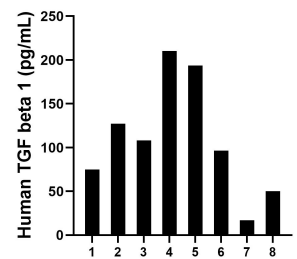
## Selected Validation Data



Sandwich ELISA standard curve of MP02288-2, Human TGF beta 1 Recombinant Matched Antibody Pair - PBS only. 81746-7-PBS was coated to a plate as the capture antibody and incubated with serial dilutions of standard Eg0879. 81746-6-PBS was HRP conjugated as the detection antibody. Range: 31.25-2000 pg/mL



Plasma of eight individual healthy human donors was measured. The human TGF beta 1 concentration of detected samples was determined to be 11.67 ng/mL with a range of 1.56 - 18.79 ng/mL



Urine of eight individual healthy human donors was measured. The human TGF beta 1 concentration of detected samples was determined to be 109.8 pg/mL with a range of 17.1 - 210.3 pg/mL