

MYH10 Recombinant Matched Antibody Pair, PBS Only

Catalog Number: **MP02284-1**

Capture Antibody Information

Catalog Number:
86157-2-PBS
Host:
Rabbit
Isotype:
IgG
Purification Method:
Protein A purification

Clone ID:
250791E2
Reactivity:
human
GenBank:
BC150634
Immunogen Catalog Number:
Ag16113

Conjugate:
Unconjugated
Full name:
myosin, heavy chain 10, non-muscle
Gene ID:
4628

Detection Antibody Information

Catalog Number:
86157-1-PBS
Host:
Rabbit
Isotype:
IgG
Purification Method:
Protein A purification

Clone ID:
250791H4
Reactivity:
human
GenBank:
BC150634
Immunogen Catalog Number:
Ag16113

Conjugate:
Unconjugated
Full name:
myosin, heavy chain 10, non-muscle
Gene ID:
4628

Applications

Tested Applications:
Cytometric bead array

Range:
0.625-80 ng/mL (Cytometric Bead Array)

Recommended Dilutions:
It is recommended that this reagent should be titrated in each testing system to obtain optimal results.

Product Information

MP02284-1 targets MYH10 in immunoassays as a matched antibody pair. Validated in Cytometric bead array.

Capture antibody: MYH10 Recombinant antibody, PBS Only (Capture) 86157-2-PBS (250791E2). 100 µg. Concentration 1 mg/mL.

Detection antibody: MYH10 Recombinant antibody, PBS Only (Detector) 86157-1-PBS (250791H4). 100 µg. Concentration 1 mg/mL.

Unconjugated rabbit recombinant monoclonal antibody pair in PBS only storage buffer at a concentration of 1 mg/mL, ready for conjugation. Created using Proteintech's proprietary in-house recombinant technology. Recombinant production enables unrivalled batch-to-batch consistency, easy scale-up, and future security of supply.

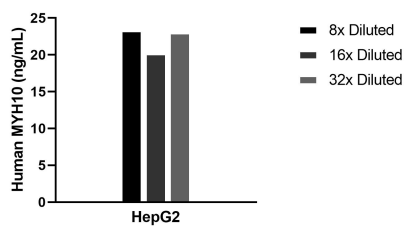
Matched antibody pairs are designed for use in a variety of assays and platforms that require matched antibody pairs.

Antibody use should be optimized for each application and assay.

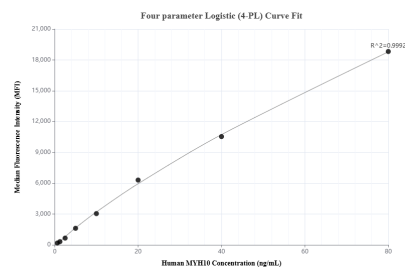
Storage

Storage:
Store at -80°C.
The product is shipped with ice packs. Upon receipt, store it immediately at -80°C
Storage buffer:
PBS only

Selected Validation Data



The mean MYH10 concentration was determined to be 22.2 ng/mL in HepG2 cell extract based on a 0.9 mg/mL extract load.



Cytometric bead array standard curve of MP02284-1, MYH10 Recombinant Matched Antibody Pair, PBS Only. Capture antibody: 86157-2-PBS. Detection antibody: 86157-1-PBS. Standard: Ag16113. Range: 0.625-80 ng/mL.