

LPP Recombinant Matched Antibody Pair, PBS Only

Catalog Number: MP02282-1

Capture Antibody Information

Catalog Number:
86117-2-PBS

Host:
Rabbit

Isotype:
IgG

Purification Method:
Protein A purification

Clone ID:
250773F6

Reactivity:
human

GenBank:
BC130584

Immunogen Catalog Number:
Ag19205

Conjugate:
Unconjugated

Full name:
LIM domain containing preferred translocation partner in lipoma

Gene ID:
4026

Detection Antibody Information

Catalog Number:
86117-1-PBS

Host:
Rabbit

Isotype:
IgG

Purification Method:
Protein A purification

Clone ID:
250773H5

Reactivity:
human

GenBank:
BC130584

Immunogen Catalog Number:
Ag19205

Conjugate:
Unconjugated

Full name:
LIM domain containing preferred translocation partner in lipoma

Gene ID:
4026

Applications

Tested Applications:
Cytometric bead array

Range:
0.156-20 ng/mL (Cytometric Bead Array)

Recommended Dilutions:
It is recommended that this reagent should be titrated in each testing system to obtain optimal results.

Product Information

MP02282-1 targets LPP in immunoassays as a matched antibody pair. Validated in Cytometric bead array.

Capture antibody: LPP Recombinant antibody, PBS Only (Capture) 86117-2-PBS (250773F6). 100 µg. Concentration 1 mg/mL.

Detection antibody: LPP Recombinant antibody, PBS Only (Detector) 86117-1-PBS (250773H5). 100 µg. Concentration 1 mg/mL.

Unconjugated rabbit recombinant monoclonal antibody pair in PBS only storage buffer at a concentration of 1 mg/mL, ready for conjugation. Created using Proteintech's proprietary in-house recombinant technology. Recombinant production enables unrivalled batch-to-batch consistency, easy scale-up, and future security of supply.

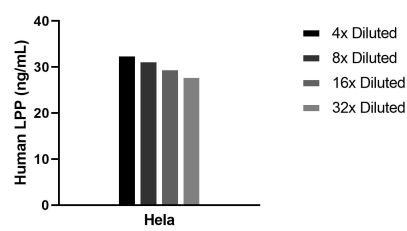
Matched antibody pairs are designed for use in a variety of assays and platforms that require matched antibody pairs.

Antibody use should be optimized for each application and assay.

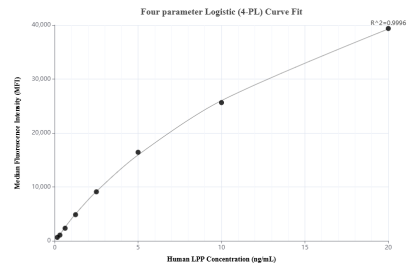
Storage

Storage:
Store at -80°C.
The product is shipped with ice packs. Upon receipt, store it immediately at -80°C
Storage buffer:
PBS only

Selected Validation Data



The mean LPP concentration was determined to be 30.5 ng/mL in HeLa cell extract based on a 0.9 mg/mL extract load.



Cytometric bead array standard curve of MP02282-1, LPP Recombinant Matched Antibody Pair, PBS Only. Capture antibody: 86117-2-PBS. Detection antibody: 86117-1-PBS. Standard: Ag19205. Range: 0.156-20 ng/mL.