

# Neuropilin 2 Recombinant Matched Antibody Pair, PBS Only

Catalog Number: **MP02281-2**

## Capture Antibody Information

Catalog Number:  
86126-2-PBS  
Host:  
Rabbit  
Isotype:  
IgG  
Purification Method:  
Protein A purification

Clone ID:  
250688B8  
Reactivity:  
human  
GenBank:  
NM\_201266.1  
Immunogen Catalog Number:  
Eg3125

Conjugate:  
Unconjugated  
Full name:  
neuropilin 2  
Gene ID:  
8828

## Detection Antibody Information

Catalog Number:  
86126-3-PBS  
Host:  
Rabbit  
Isotype:  
IgG  
Purification Method:  
Protein A purification

Clone ID:  
250688C6  
Reactivity:  
human  
GenBank:  
NM\_201266.1  
Immunogen Catalog Number:  
Eg3125

Conjugate:  
Unconjugated  
Full name:  
neuropilin 2  
Gene ID:  
8828

## Applications

Tested Applications:  
Sandwich ELISA

Range:  
0.156-10 ng/mL (Sandwich ELISA)

Recommended Dilutions:  
It is recommended that this reagent should be titrated in each testing system to obtain optimal results.

## Product Information

MP02281-2 targets Neuropilin 2 in immunoassays as a matched antibody pair. Validated in Sandwich ELISA.

Capture antibody: NRP2 Recombinant antibody, PBS Only (Capture) 86126-2-PBS (250688B8). 100 µg. Concentration 1 mg/mL.

Detection antibody: Neuropilin 2 Recombinant antibody, PBS Only (Detector) 86126-3-PBS (250688C6). 100 µg. Concentration 1 mg/mL.

Unconjugated rabbit recombinant monoclonal antibody pair in PBS only storage buffer at a concentration of 1 mg/mL, ready for conjugation. Created using Proteintech's proprietary in-house recombinant technology. Recombinant production enables unrivalled batch-to-batch consistency, easy scale-up, and future security of supply.

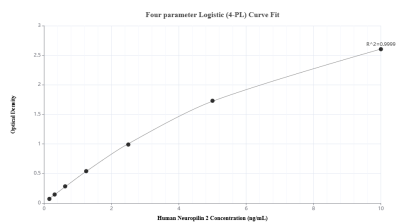
Matched antibody pairs are designed for use in a variety of assays and platforms that require matched antibody pairs.

Antibody use should be optimized for each application and assay.

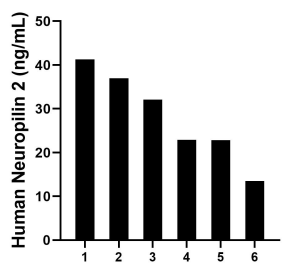
## Storage

Storage:  
Store at -80°C.  
**The product is shipped with ice packs. Upon receipt, store it immediately at -80°C**  
Storage buffer:  
PBS only

## Selected Validation Data



Sandwich ELISA standard curve of MP02281-2, Human Neuropilin 2 Recombinant Matched Antibody Pair - PBS only. 86126-2-PBS was coated to a plate as the capture antibody and incubated with serial dilutions of standard Eg3125. 86126-3-PBS was HRP conjugated as the detection antibody. Range: 0.156-10 ng/mL



Serum of six individual healthy human donors was measured. The human Neuropilin 2 concentration of detected samples was determined to be 28.25 ng/mL with a range of 13.50 - 41.26 ng/mL