

# TGFBI/BIGH3 Recombinant Matched Antibody Pair, PBS Only

Catalog Number: **MP02279-2**

## Capture Antibody Information

<b>Catalog Number:</b> 80805-5-PBS	<b>Clone ID:</b> 243108F11	<b>Conjugate:</b> Unconjugated
<b>Host:</b> Rabbit	<b>Reactivity:</b> human	<b>Full name:</b> transforming growth factor, beta-induced, 68kDa
<b>Isotype:</b> IgG	<b>GenBank:</b> NM_000358.3	<b>Gene ID:</b> 7045
<b>Purification Method:</b> Protein A purification	<b>Immunogen Catalog Number:</b> Eg1233	

## Detection Antibody Information

<b>Catalog Number:</b> 80805-2-PBS	<b>Clone ID:</b> 243108E6	<b>Conjugate:</b> Unconjugated
<b>Host:</b> Rabbit	<b>Reactivity:</b> human	<b>Full name:</b> transforming growth factor, beta-induced, 68kDa
<b>Isotype:</b> IgG	<b>GenBank:</b> NM_000358.3	<b>Gene ID:</b> 7045
<b>Purification Method:</b> Protein A purification	<b>Immunogen Catalog Number:</b> Eg1233	

## Applications

<b>Tested Applications:</b> Sandwich ELISA	<b>Range:</b> 97.7-6250 pg/mL (Sandwich ELISA)	<b>Recommended Dilutions:</b> It is recommended that this reagent should be titrated in each testing system to obtain optimal results.
---	---	---

## Product Information

MP02279-2 targets TGFBI/BIGH3 in immunoassays as a matched antibody pair. Validated in Sandwich ELISA.

Capture antibody: beta IG-H3/TGFBI Recombinant antibody, PBS Only (Capture) 80805-5-PBS (243108F11). 100 µg. Concentration 1 mg/mL.

Detection antibody: beta IG-H3/TGFBI Recombinant antibody, PBS Only (Detector) 80805-2-PBS (243108E6). 100 µg. Concentration 1 mg/mL.

Unconjugated rabbit recombinant monoclonal antibody pair in PBS only storage buffer at a concentration of 1 mg/mL, ready for conjugation. Created using Proteintech's proprietary in-house recombinant technology. Recombinant production enables unrivalled batch-to-batch consistency, easy scale-up, and future security of supply.

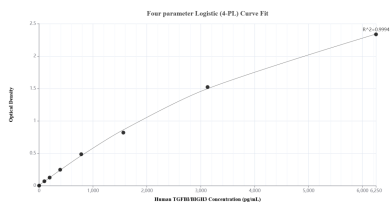
Matched antibody pairs are designed for use in a variety of assays and platforms that require matched antibody pairs.

Antibody use should be optimized for each application and assay.

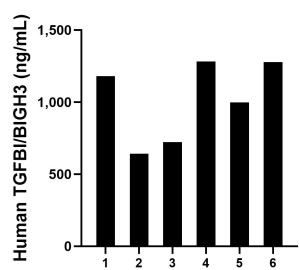
## Storage

**Storage:**  
Store at -80°C.  
**The product is shipped with ice packs. Upon receipt, store it immediately at -80°C**  
**Storage buffer:**  
PBS only

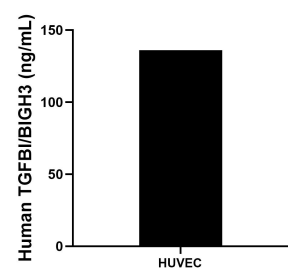
## Selected Validation Data



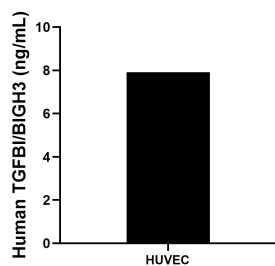
Sandwich ELISA standard curve of MP02279-2, Human TGFBI/BI GH3 Recombinant Matched Antibody Pair - PBS only. 80805-5-PBS was coated to a plate as the capture antibody and incubated with serial dilutions of standard Eg1233. 80805-2-PBS was HRP conjugated as the detection antibody. Range: 97.7-6250 pg/mL



Plasma of six individual healthy human donors was measured. The TGFBI/BI GH3 concentration of detected samples was determined to be 1,016.5 ng/mL with a range of 640.9-1,282.5 ng/mL.



The mean TGFBI/BI GH3 concentration was determined to be 136.1 ng/mL in HUVEC cell extract based on a 2.2 mg/mL extract load.



HUVEC cells were cultured in DMEM supplemented with 10% fetal bovine serum, 2.5 mM L-glutamine, 100 U/mL penicillin, and 100 µg/mL streptomycin sulfate. An aliquot of the cell culture supernatant was removed, assayed for human TGFBI/BI GH3, and measured 7.9 ng/mL.