

TGFBI/BIGH3 Recombinant Matched Antibody Pair, PBS Only

Catalog Number: MP02279-1

Capture Antibody Information

Catalog Number:
80805-3-PBS

Host:
Rabbit

Isotype:
IgG

Purification Method:
Protein A purification

Clone ID:
243108H4

Reactivity:
human

GenBank:
NM_000358.3

Immunogen Catalog Number:
Eg1233

Conjugate:
Unconjugated

Full name:
transforming growth factor, beta-induced, 68kDa

Gene ID:
7045

Detection Antibody Information

Catalog Number:
80805-2-PBS

Host:
Rabbit

Isotype:
IgG

Purification Method:
Protein A purification

Clone ID:
243108E6

Reactivity:
human

GenBank:
NM_000358.3

Immunogen Catalog Number:
Eg1233

Conjugate:
Unconjugated

Full name:
transforming growth factor, beta-induced, 68kDa

Gene ID:
7045

Applications

Tested Applications:
Cytometric bead array

Range:
0.781-100 ng/mL (Cytometric Bead Array)

Recommended Dilutions:
It is recommended that this reagent should be titrated in each testing system to obtain optimal results.

Product Information

MP02279-1 targets TGFBI/BIGH3 in immunoassays as a matched antibody pair. Validated in Cytometric bead array.

Capture antibody: beta IG-H3/TGFBI Recombinant antibody, PBS Only (Capture) 80805-3-PBS (243108H4). 100 µg. Concentration 1 mg/mL.

Detection antibody: beta IG-H3/TGFBI Recombinant antibody, PBS Only (Detector) 80805-2-PBS (243108E6). 100 µg. Concentration 1 mg/mL.

Unconjugated rabbit recombinant monoclonal antibody pair in PBS only storage buffer at a concentration of 1 mg/mL, ready for conjugation. Created using Proteintech's proprietary in-house recombinant technology. Recombinant production enables unrivalled batch-to-batch consistency, easy scale-up, and future security of supply.

Matched antibody pairs are designed for use in a variety of assays and platforms that require matched antibody pairs.

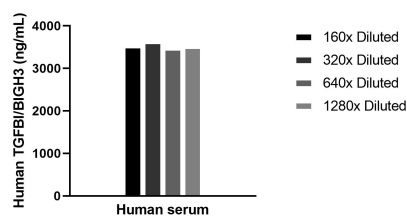
Antibody use should be optimized for each application and assay.

Storage

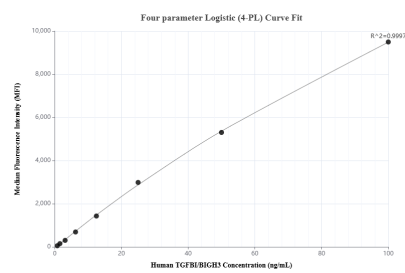
Storage:
Store at -80°C.
The product is shipped with ice packs. Upon receipt, store it immediately at -80°C

Storage buffer:
PBS only

Selected Validation Data



The mean TGFBI/BIGH3 concentration was determined to be 3586.8 ng/mL in human serum.



Cytometric bead array standard curve of MP02279-1, TGFBI/BIGH3 Recombinant Matched Antibody Pair, PBS Only. Capture antibody: 80805-3-PBS. Detection antibody: 80805-2-PBS. Standard: Eg1233. Range: 0.781-100 ng/mL.