

# MATN3 Recombinant Matched Antibody Pair, PBS Only

Catalog Number: MP02278-1

## Capture Antibody Information

Catalog Number:  
86125-2-PBS  
Host:  
Rabbit  
Isotype:  
IgG  
Purification Method:  
Protein A purification

Clone ID:  
250692C3  
Reactivity:  
human  
GenBank:  
NM\_002381.4  
Immunogen Catalog Number:  
Eg3136

Conjugate:  
Unconjugated  
Full name:  
matrilin 3  
Gene ID:  
4148

## Detection Antibody Information

Catalog Number:  
86125-1-PBS  
Host:  
Rabbit  
Isotype:  
IgG  
Purification Method:  
Protein A purification

Clone ID:  
250692C11  
Reactivity:  
human  
GenBank:  
NM\_002381.4  
Immunogen Catalog Number:  
Eg3136

Conjugate:  
Unconjugated  
Full name:  
matrilin 3  
Gene ID:  
4148

## Applications

Tested Applications:  
Cytometric bead array, Sandwich  
ELISA

Range:  
0.313-40 ng/mL (Cytometric Bead  
Array)  
0.313-20 ng/mL (Sandwich ELISA)

Recommended Dilutions:  
It is recommended that this reagent  
should be titrated in each testing  
system to obtain optimal results.

## Product Information

MP02278-1 targets MATN3 in immunoassays as a matched antibody pair. Validated in Cytometric bead array, Sandwich ELISA.

Capture antibody: MATN3 Recombinant antibody, PBS Only (Capture) 86125-2-PBS (250692C3). 100 µg. Concentration 1 mg/mL.

Detection antibody: MATN3 Recombinant antibody, PBS Only (Detector) 86125-1-PBS (250692C11). 100 µg. Concentration 1 mg/mL.

Unconjugated rabbit recombinant monoclonal antibody pair in PBS only storage buffer at a concentration of 1 mg/mL, ready for conjugation. Created using Proteintech's proprietary in-house recombinant technology. Recombinant production enables unrivalled batch-to-batch consistency, easy scale-up, and future security of supply.

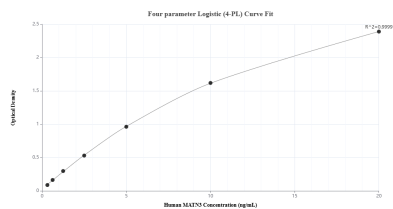
Matched antibody pairs are designed for use in a variety of assays and platforms that require matched antibody pairs.

Antibody use should be optimized for each application and assay.

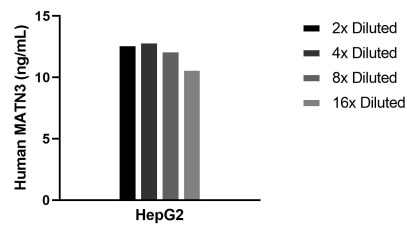
## Storage

Storage:  
Store at -80°C.  
The product is shipped with ice packs. Upon receipt, store it immediately at -80°C  
Storage buffer:  
PBS only

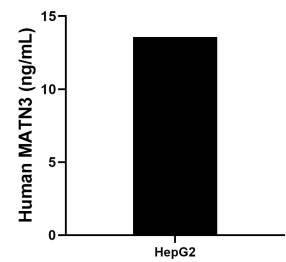
## Selected Validation Data



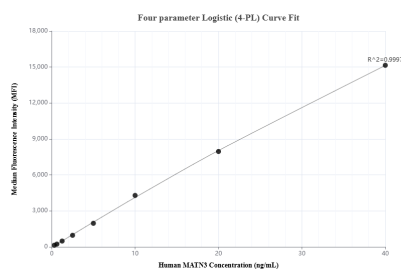
Sandwich ELISA standard curve of MP02278-1, Human MATN3 Recombinant Matched Antibody Pair - PBS only. 86125-2-PBS was coated to a plate as the capture antibody and incubated with serial dilutions of standard Eg3136. 86125-1-PBS was HRP conjugated as the detection antibody. Range: 0.313-20 ng/mL



The mean MATN3 concentration was determined to be 12.1 ng/mL in HepG2 cell extract based on a 0.9 mg/mL extract load.



The mean MATN3 concentration was determined to be 13.57 ng/mL in HepG2 cell extract based on a 0.9 mg/mL extract load.



Cytometric bead array standard curve of MP02278-1, MATN3 Recombinant Matched Antibody Pair, PBS Only. Capture antibody: 86125-2-PBS. Detection antibody: 86125-1-PBS. Standard: Eg3136. Range: 0.313-40 ng/mL