

IRS1 Recombinant Matched Antibody Pair, PBS Only

Catalog Number: **MP02273-1**

Capture Antibody Information

Catalog Number:
82730-12-PBS
Host:
Rabbit
Isotype:
IgG
Purification Method:
Protein A purification

Clone ID:
250510E5
Reactivity:
human
GenBank:
BC053895
Immunogen Catalog Number:
Ag11714

Conjugate:
Unconjugated
Full name:
insulin receptor substrate 1
Gene ID:
3667

Detection Antibody Information

Catalog Number:
82730-11-PBS
Host:
Rabbit
Isotype:
IgG
Purification Method:
Protein A purification

Clone ID:
250510F11
Reactivity:
human
GenBank:
BC053895
Immunogen Catalog Number:
Ag11714

Conjugate:
Unconjugated
Full name:
insulin receptor substrate 1
Gene ID:
3667

Applications

Tested Applications:
Sandwich ELISA

Range:
1.95-125 ng/mL (Sandwich ELISA)

Recommended Dilutions:
It is recommended that this reagent should be titrated in each testing system to obtain optimal results.

Product Information

MP02273-1 targets IRS1 in immunoassays as a matched antibody pair. Validated in Sandwich ELISA.

Capture antibody: IRS1 Recombinant antibody, PBS Only (Capture) 82730-12-PBS (250510E5). 100 µg. Concentration 1 mg/mL.

Detection antibody: IRS1 Recombinant antibody, PBS Only (Detector) 82730-11-PBS (250510F11). 100 µg. Concentration 1 mg/mL.

Unconjugated rabbit recombinant monoclonal antibody pair in PBS only storage buffer at a concentration of 1 mg/mL, ready for conjugation. Created using Proteintech's proprietary in-house recombinant technology. Recombinant production enables unrivalled batch-to-batch consistency, easy scale-up, and future security of supply.

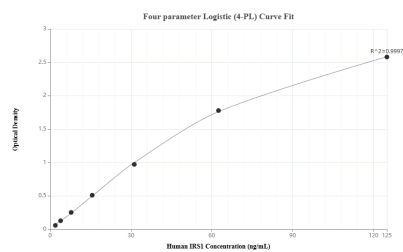
Matched antibody pairs are designed for use in a variety of assays and platforms that require matched antibody pairs.

Antibody use should be optimized for each application and assay.

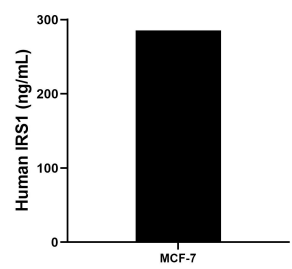
Storage

Storage:
Store at -80°C.
The product is shipped with ice packs. Upon receipt, store it immediately at -80°C
Storage buffer:
PBS only

Selected Validation Data



Sandwich ELISA standard curve of MP02273-1, Human IRS1 Recombinant Matched Antibody Pair - PBS only. 82730-12-PBS was coated to a plate as the capture antibody and incubated with serial dilutions of standard Ag11714. 82730-11-PBS was HRP conjugated as the detection antibody. Range: 1.95-125 ng/mL



The mean IRS1 concentration was determined to be 285.15 ng/mL in MCF-7 cell extract based on a 1.3 mg/mL extract load.