

# Growth Hormone Recombinant Matched Antibody Pair, PBS Only

Catalog Number: **MP02272-1**

## Capture Antibody Information

|   |   |                                   |
|---|---|-----------------------------------|
| <b>Catalog Number:</b><br>82813-8-PBS                 | <b>Clone ID:</b><br>250390C2                | <b>Conjugate:</b><br>Unconjugated |
| <b>Host:</b><br>Rabbit                                | <b>Reactivity:</b><br>human                 | <b>Full name:</b><br>GH1          |
| <b>Isotype:</b><br>IgG                                | <b>GenBank:</b><br>BC075012                 | <b>Gene ID:</b><br>2688           |
| <b>Purification Method:</b><br>Protein A purification | <b>Immunogen Catalog Number:</b><br>HZ-1007 |                                   |

## Detection Antibody Information

|   |   |                                   |
|---|---|-----------------------------------|
| <b>Catalog Number:</b><br>82813-9-PBS                 | <b>Clone ID:</b><br>250390B5                | <b>Conjugate:</b><br>Unconjugated |
| <b>Host:</b><br>Rabbit                                | <b>Reactivity:</b><br>human                 | <b>Full name:</b><br>GH1          |
| <b>Isotype:</b><br>IgG                                | <b>GenBank:</b><br>BC075012                 | <b>Gene ID:</b><br>2688           |
| <b>Purification Method:</b><br>Protein A purification | <b>Immunogen Catalog Number:</b><br>HZ-1007 |                                   |

## Applications

|   |   |   |
|---|---|---|
| <b>Tested Applications:</b><br>Sandwich ELISA | <b>Range:</b><br>19.5-1250 pg/mL (Sandwich ELISA) | <b>Recommended Dilutions:</b><br>It is recommended that this reagent should be titrated in each testing system to obtain optimal results. |
|---|---|---|

## Product Information

MP02272-1 targets Growth Hormone in immunoassays as a matched antibody pair. Validated in Sandwich ELISA.

Capture antibody: GH1 Recombinant antibody, PBS Only (Capture) 82813-8-PBS (250390C2). 100 µg. Concentration 1 mg/mL.

Detection antibody: GH1 Recombinant antibody, PBS Only (Detector) 82813-9-PBS (250390B5). 100 µg. Concentration 1 mg/mL.

Unconjugated rabbit recombinant monoclonal antibody pair in PBS only storage buffer at a concentration of 1 mg/mL, ready for conjugation. Created using Proteintech's proprietary in-house recombinant technology. Recombinant production enables unrivalled batch-to-batch consistency, easy scale-up, and future security of supply.

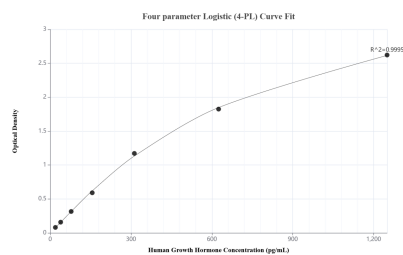
Matched antibody pairs are designed for use in a variety of assays and platforms that require matched antibody pairs.

Antibody use should be optimized for each application and assay.

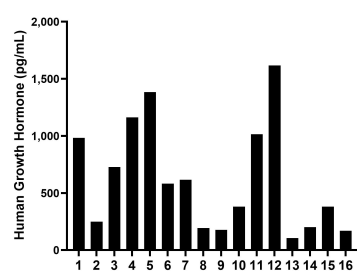
## Storage

**Storage:**  
Store at -80°C.  
**The product is shipped with ice packs. Upon receipt, store it immediately at -80°C**  
**Storage buffer:**  
PBS only

## Selected Validation Data



Sandwich ELISA standard curve of MP02272-1, Human Growth Hormone Recombinant Matched Antibody Pair - PBS only. 82813-8-PBS was coated to a plate as the capture antibody and incubated with serial dilutions of standard HZ-1007. 82813-9-PBS was HRP conjugated as the detection antibody. Range: 19.5-1250 pg/mL.



Serum of sixteen individual healthy human donors was measured. The Growth Hormone concentration of detected samples was determined to be 622.3 pg/mL with a range of 106.6-1,616.6 pg/mL.