

TACSTD2/TROP2 Recombinant Matched Antibody Pair, PBS Only

Catalog Number: **MP02271-1**

Capture Antibody Information

Catalog Number:
86155-3-PBS
Host:
Rabbit
Isotype:
IgG
Purification Method:
Protein A purification

Clone ID:
250382E7
Reactivity:
human
GenBank:
BC009409
Immunogen Catalog Number:
Eg3329

Conjugate:
Unconjugated
Full name:
tumor-associated calcium signal transducer 2
Gene ID:
4070

Detection Antibody Information

Catalog Number:
86155-2-PBS
Host:
Rabbit
Isotype:
IgG
Purification Method:
Protein A purification

Clone ID:
250382C2
Reactivity:
human
GenBank:
BC009409
Immunogen Catalog Number:
Eg3329

Conjugate:
Unconjugated
Full name:
tumor-associated calcium signal transducer 2
Gene ID:
4070

Applications

Tested Applications:
Sandwich ELISA

Range:
15.6-1000 pg/mL (Sandwich ELISA)

Recommended Dilutions:
It is recommended that this reagent should be titrated in each testing system to obtain optimal results.

Product Information

MP02271-1 targets TACSTD2/TROP2 in immunoassays as a matched antibody pair. Validated in Sandwich ELISA.

Capture antibody: TACSTD2 Recombinant antibody, PBS Only (Capture) 86155-3-PBS (250382E7). 100 µg. Concentration 1 mg/mL.

Detection antibody: TACSTD2 Recombinant antibody, PBS Only (Detector) 86155-2-PBS (250382C2). 100 µg. Concentration 1 mg/mL.

Unconjugated rabbit recombinant monoclonal antibody pair in PBS only storage buffer at a concentration of 1 mg/mL, ready for conjugation. Created using Proteintech's proprietary in-house recombinant technology. Recombinant production enables unrivalled batch-to-batch consistency, easy scale-up, and future security of supply.

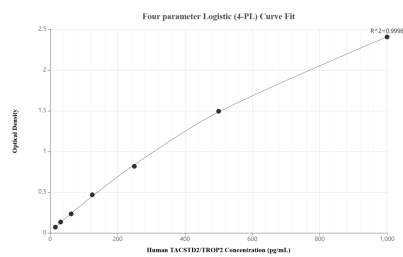
Matched antibody pairs are designed for use in a variety of assays and platforms that require matched antibody pairs.

Antibody use should be optimized for each application and assay.

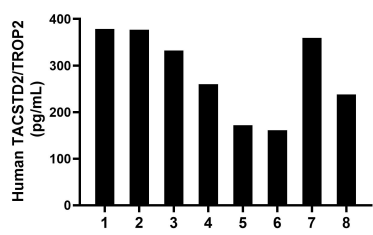
Storage

Storage:
Store at -80°C.
The product is shipped with ice packs. Upon receipt, store it immediately at -80°C
Storage buffer:
PBS only

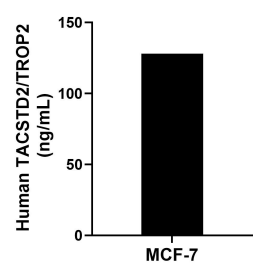
Selected Validation Data



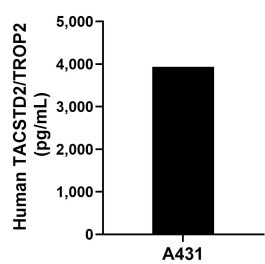
Sandwich ELISA standard curve of MP02271-1, Human TACSTD2/TROP2 Recombinant Matched Antibody Pair - PBS only. 86155-3-PBS was coated to a plate as the capture antibody and incubated with serial dilutions of standard Eg3329. 86155-2-PBS was HRP conjugated as the detection antibody. Range: 15.6-1000 pg/mL



Serum of eight individual healthy human donors was measured. The TACSTD2/TROP2 concentration of detected samples was determined to be 284.7 pg/mL with a range of 161.1-378.4 pg/mL



The mean TACSTD2/TROP2 concentration was determined to be 128.1 ng/mL in MCF-7 cell extract based on a 1.3 mg/mL extract load.



A431 were cultured in DMEM supplemented with 10% fetal bovine serum, 2.5 mM L-glutamine, 100 U/mL penicillin, and 100 μ g/mL streptomycin sulfate. An aliquot of the cell culture supernate was removed, assayed for human TACSTD2/TROP2, and measured 3,934.4 pg/mL