

# SSB Recombinant Matched Antibody Pair, PBS Only

Catalog Number: MP02269-1

## Capture Antibody Information

**Catalog Number:**  
85944-1-PBS  
**Host:**  
Rabbit  
**Isotype:**  
IgG  
**Purification Method:**  
Protein A purification

**Clone ID:**  
250465D3  
**Reactivity:**  
human  
**GenBank:**  
BC001289  
**Immunogen Catalog Number:**  
Ag2294

**Conjugate:**  
Unconjugated  
**Full name:**  
Sjogren syndrome antigen B (autoantigen La)  
**Gene ID:**  
6741

## Detection Antibody Information

**Catalog Number:**  
85944-3-PBS  
**Host:**  
Rabbit  
**Isotype:**  
IgG  
**Purification Method:**  
Protein A purification

**Clone ID:**  
250465C3  
**Reactivity:**  
human  
**GenBank:**  
BC001289  
**Immunogen Catalog Number:**  
Ag2294

**Conjugate:**  
Unconjugated  
**Full name:**  
Sjogren syndrome antigen B (autoantigen La)  
**Gene ID:**  
6741

## Applications

**Tested Applications:**  
Sandwich ELISA

**Range:**  
7.81-500 ng/mL (Sandwich ELISA)

**Recommended Dilutions:**  
It is recommended that this reagent should be titrated in each testing system to obtain optimal results.

## Product Information

MP02269-1 targets SSB in immunoassays as a matched antibody pair. Validated in Sandwich ELISA.

Capture antibody: SSB Recombinant antibody, PBS Only (Capture) 85944-1-PBS (250465D3). 100 µg. Concentration 1 mg/mL.

Detection antibody: SSB Recombinant antibody, PBS Only (Detector) 85944-3-PBS (250465C3). 100 µg. Concentration 1 mg/mL.

Unconjugated rabbit recombinant monoclonal antibody pair in PBS only storage buffer at a concentration of 1 mg/mL, ready for conjugation. Created using Proteintech's proprietary in-house recombinant technology. Recombinant production enables unrivalled batch-to-batch consistency, easy scale-up, and future security of supply.

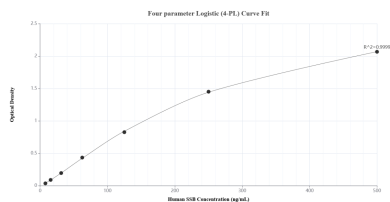
Matched antibody pairs are designed for use in a variety of assays and platforms that require matched antibody pairs.

Antibody use should be optimized for each application and assay.

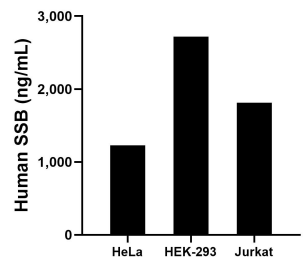
## Storage

**Storage:**  
Store at -80°C.  
**The product is shipped with ice packs. Upon receipt, store it immediately at -80°C**  
**Storage buffer:**  
PBS only

## Selected Validation Data



Sandwich ELISA standard curve of MP02269-1, Human SSB Recombinant Matched Antibody Pair - PBS only. 85944-1-PBS was coated to a plate as the capture antibody and incubated with serial dilutions of standard Ag2294. 85944-3-PBS was HRP conjugated as the detection antibody. Range: 7.81-500 ng/mL.



The mean SSB concentration was determined to be 1,226.41 ng/mL in HeLa cell extract based on a 1.30 mg/mL extract load, 2718.95 ng/mL in HEK-293 cell extract based on a 2.20 mg/mL extract load and 1,813.81 ng/mL in Jurkat cell extract based on a 1.90 mg/mL extract load.