

# IRE1/ERN1 Recombinant Matched Antibody Pair, PBS Only

Catalog Number: MP02267-1

## Capture Antibody Information

Catalog Number:  
82687-4-PBS  
Host:  
Rabbit  
Isotype:  
IgG  
Purification Method:  
Protein A purification

Clone ID:  
250145B3  
Reactivity:  
human  
GenBank:  
BC130405  
Immunogen Catalog Number:  
Ag25580

Conjugate:  
Unconjugated  
Full name:  
endoplasmic reticulum to nucleus  
signaling 1  
Gene ID:  
2081

## Detection Antibody Information

Catalog Number:  
82687-3-PBS  
Host:  
Rabbit  
Isotype:  
IgG  
Purification Method:  
Protein A purification

Clone ID:  
250145G5  
Reactivity:  
human  
GenBank:  
BC130405  
Immunogen Catalog Number:  
Ag25580

Conjugate:  
Unconjugated  
Full name:  
endoplasmic reticulum to nucleus  
signaling 1  
Gene ID:  
2081

## Applications

Tested Applications:  
Sandwich ELISA

Range:  
0.469-30 ng/mL (Sandwich ELISA)

Recommended Dilutions:  
It is recommended that this reagent should be titrated in each testing system to obtain optimal results.

## Product Information

MP02267-1 targets IRE1/ERN1 in immunoassays as a matched antibody pair. Validated in Sandwich ELISA.

Capture antibody: IRE1; ERN1 Recombinant antibody, PBS Only (Capture) 82687-4-PBS (250145B3). 100 µg. Concentration 1 mg/mL.

Detection antibody: IRE1; ERN1 Recombinant antibody, PBS Only (Detector) 82687-3-PBS (250145G5). 100 µg. Concentration 1 mg/mL.

Unconjugated rabbit recombinant monoclonal antibody pair in PBS only storage buffer at a concentration of 1 mg/mL, ready for conjugation. Created using Proteintech's proprietary in-house recombinant technology. Recombinant production enables unrivalled batch-to-batch consistency, easy scale-up, and future security of supply.

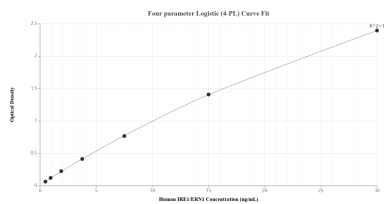
Matched antibody pairs are designed for use in a variety of assays and platforms that require matched antibody pairs.

Antibody use should be optimized for each application and assay.

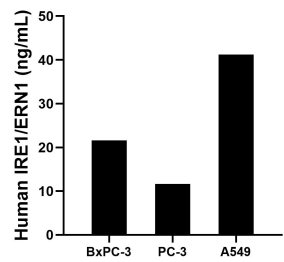
## Storage

Storage:  
Store at -80°C.  
The product is shipped with ice packs. Upon receipt, store it immediately at -80°C  
Storage buffer:  
PBS only

## Selected Validation Data



Sandwich ELISA standard curve of MP02267-1, Human IRE1/ERN1 Recombinant Matched Antibody Pair - PBS only. 82687-4-PBS was coated to a plate as the capture antibody and incubated with serial dilutions of standard Ag25580. 82687-3-PBS was HRP conjugated as the detection antibody. Range: 0.469-30 ng/mL.



The mean IRE1/ERN1 concentration was determined to be 21.57 ng/mL in BxPC-3 cell extract based on a 2.00 mg/mL extract load, 11.61 ng/mL in PC-3 cell extract based on a 1.60 mg/mL extract load and 41.21 ng/mL in A549 cell extract based on a 2.40 mg/mL extract load.