

# Kallikrein 6 Recombinant Matched Antibody Pair, PBS Only

Catalog Number: MP02265-1

## Capture Antibody Information

<b>Catalog Number:</b> 86108-2-PBS	<b>Clone ID:</b> 250322F11	<b>Conjugate:</b> Unconjugated
<b>Host:</b> Rabbit	<b>Reactivity:</b> human	<b>Full name:</b> kallikrein-related peptidase 6
<b>Isotype:</b> IgG	<b>GenBank:</b> NM_001012964.2	<b>Gene ID:</b> 5653
<b>Purification Method:</b> Protein A purification	<b>Immunogen Catalog Number:</b> Eg2826	

## Detection Antibody Information

<b>Catalog Number:</b> 86108-1-PBS	<b>Clone ID:</b> 250322G7	<b>Conjugate:</b> Unconjugated
<b>Host:</b> Rabbit	<b>Reactivity:</b> human	<b>Full name:</b> kallikrein-related peptidase 6
<b>Isotype:</b> IgG	<b>GenBank:</b> NM_001012964.2	<b>Gene ID:</b> 5653
<b>Purification Method:</b> Protein A purification	<b>Immunogen Catalog Number:</b> Eg2826	

## Applications

<b>Tested Applications:</b> Sandwich ELISA	<b>Range:</b> 78.1-5000 pg/mL (Sandwich ELISA)	<b>Recommended Dilutions:</b> It is recommended that this reagent should be titrated in each testing system to obtain optimal results.
---	---	---

## Product Information

MP02265-1 targets Kallikrein 6 in immunoassays as a matched antibody pair. Validated in Sandwich ELISA.

Capture antibody: KLK6 Recombinant antibody, PBS Only (Capture) 86108-2-PBS (250322F11). 100 µg. Concentration 1 mg/mL.

Detection antibody: KLK6 Recombinant antibody, PBS Only (Detector) 86108-1-PBS (250322G7). 100 µg. Concentration 1 mg/mL.

Unconjugated rabbit recombinant monoclonal antibody pair in PBS only storage buffer at a concentration of 1 mg/mL, ready for conjugation. Created using Proteintech's proprietary in-house recombinant technology. Recombinant production enables unrivalled batch-to-batch consistency, easy scale-up, and future security of supply.

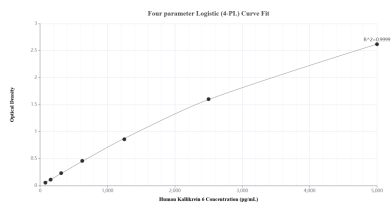
Matched antibody pairs are designed for use in a variety of assays and platforms that require matched antibody pairs.

Antibody use should be optimized for each application and assay.

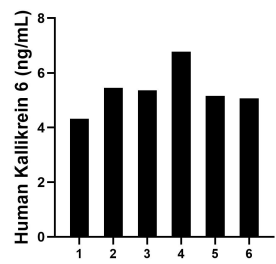
## Storage

**Storage:**  
Store at -80°C.  
**The product is shipped with ice packs. Upon receipt, store it immediately at -80°C**  
**Storage buffer:**  
PBS only

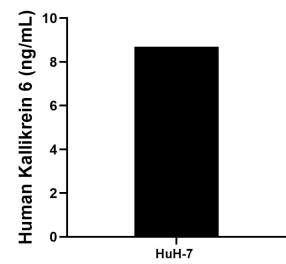
## Selected Validation Data



Sandwich ELISA standard curve of MP02265-1, Human Kallikrein 6 Recombinant Matched Antibody Pair - PBS only. 86108-2-PBS was coated to a plate as the capture antibody and incubated with serial dilutions of standard Eg2826. 86108-1-PBS was HRP conjugated as the detection antibody. Range: 78.1-5000 pg/mL



Serum of six individual healthy human donors was measured. The Kallikrein 6 concentration of detected samples was determined to be 5.4 ng/mL with a range of 4.3-6.8 ng/mL.



The mean Kallikrein 6 concentration was determined to be 8.7 ng/mL in HuH-7 cell extract based on a 1.4 mg/mL extract load.