

CTHRC1 Recombinant Matched Antibody Pair, PBS Only

Catalog Number: **MP02264-1**

Capture Antibody Information

Catalog Number: 83629-4-PBS	Clone ID: 250319C3	Conjugate: Unconjugated
Host: Rabbit	Reactivity: human	Full name: collagen triple helix repeat containing 1
Isotype: IgG	GenBank: NM_138455.3	Gene ID: 115908
Purification Method: Protein A purification	Immunogen Catalog Number: Eg2824	

Detection Antibody Information

Catalog Number: 83629-3-PBS	Clone ID: 250319G11	Conjugate: Unconjugated
Host: Rabbit	Reactivity: human	Full name: collagen triple helix repeat containing 1
Isotype: IgG	GenBank: NM_138455.3	Gene ID: 115908
Purification Method: Protein A purification	Immunogen Catalog Number: Eg2824	

Applications

Tested Applications: Cytometric bead array	Range: 0.156-20 ng/mL (Cytometric Bead Array)	Recommended Dilutions: It is recommended that this reagent should be titrated in each testing system to obtain optimal results.
--	---	---

Product Information

MP02264-1 targets CTHRC1 in immunoassays as a matched antibody pair. Validated in Cytometric bead array.

Capture antibody: CTHRC1 Recombinant antibody, PBS Only (Capture) 83629-4-PBS (250319C3). 100 µg. Concentration 1 mg/mL.

Detection antibody: CTHRC1 Recombinant antibody, PBS Only (Detector) 83629-3-PBS (250319G11). 100 µg. Concentration 1 mg/mL.

Unconjugated rabbit recombinant monoclonal antibody pair in PBS only storage buffer at a concentration of 1 mg/mL, ready for conjugation. Created using Proteintech's proprietary in-house recombinant technology. Recombinant production enables unrivalled batch-to-batch consistency, easy scale-up, and future security of supply.

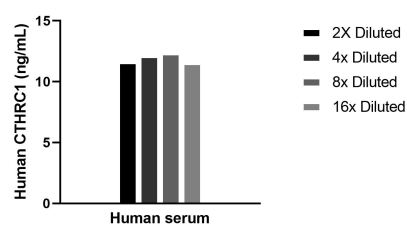
Matched antibody pairs are designed for use in a variety of assays and platforms that require matched antibody pairs.

Antibody use should be optimized for each application and assay.

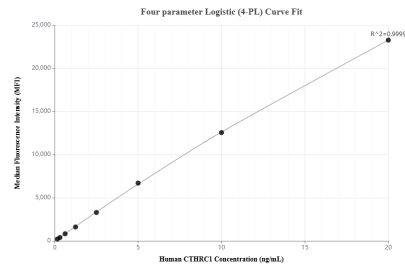
Storage

Storage:
Store at -80°C.
The product is shipped with ice packs. Upon receipt, store it immediately at -80°C
Storage buffer:
PBS only

Selected Validation Data



The mean CTHRC1 concentration was determined to be 11.9 ng/mL in human serum.



Cytometric bead array standard curve of MP02264-1, CTHRC1 Recombinant Matched Antibody Pair, PBS Only. Capture antibody: 83629-4-PBS. Detection antibody: 83629-3-PBS. Standard: Eg2824. Range: 0.156-20 ng/mL.