

GCDFP-15/PIP Recombinant Matched Antibody Pair, PBS Only

Catalog Number: **MP02262-2**

Capture Antibody Information

Catalog Number:
86152-1-PBS
Host:
Rabbit
Isotype:
IgG
Purification Method:
Protein A purification

Clone ID:
250676D4
Reactivity:
human
GenBank:
NM_002652.3
Immunogen Catalog Number:
Eg3018

Conjugate:
Unconjugated
Full name:
prolactin-induced protein
Gene ID:
5304

Detection Antibody Information

Catalog Number:
86152-3-PBS
Host:
Rabbit
Isotype:
IgG
Purification Method:
Protein A purification

Clone ID:
250676B11
Reactivity:
human
GenBank:
NM_002652.3
Immunogen Catalog Number:
Eg3018

Conjugate:
Unconjugated
Full name:
prolactin-induced protein
Gene ID:
5304

Applications

Tested Applications:
Sandwich ELISA

Range:
0.156–10 ng/mL (Sandwich ELISA)

Recommended Dilutions:
It is recommended that this reagent should be titrated in each testing system to obtain optimal results.

Product Information

MP02262-2 targets GCDFP-15/PIP in immunoassays as a matched antibody pair. Validated in Sandwich ELISA.

Capture antibody: GCDFP-15/PIP Recombinant antibody, PBS Only (Capture/Detector) 86152-1-PBS (250676D4). 100 μ g. Concentration 1 mg/mL.

Detection antibody: PIP Recombinant antibody, PBS Only (Detector) 86152-3-PBS (250676B11). 100 μ g. Concentration 1 mg/mL.

Unconjugated rabbit recombinant monoclonal antibody pair in PBS only storage buffer at a concentration of 1 mg/mL, ready for conjugation. Created using Proteintech's proprietary in-house recombinant technology. Recombinant production enables unrivalled batch-to-batch consistency, easy scale-up, and future security of supply.

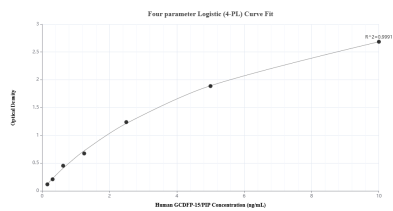
Matched antibody pairs are designed for use in a variety of assays and platforms that require matched antibody pairs.

Antibody use should be optimized for each application and assay.

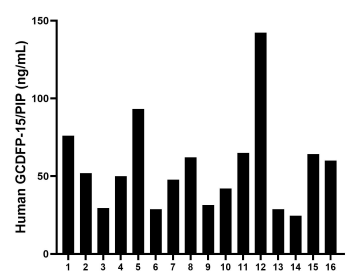
Storage

Storage:
Store at -80°C.
The product is shipped with ice packs. Upon receipt, store it immediately at -80°C
Storage buffer:
PBS only

Selected Validation Data



Sandwich ELISA standard curve of MP02262-2, Human GCDFP-15/PIP Recombinant Matched Antibody Pair - PBS only. 86152-1-PBS was coated to a plate as the capture antibody and incubated with serial dilutions of standard Eg3018. 86152-3-PBS was HRP conjugated as the detection antibody. Range: 0.156-10 ng/mL



Serum of six individual healthy human donors was measured. The human TNFR1/CD120a concentration of detected samples was determined to be 56.11 ng/mL with a range of 24.53 - 142.30 ng/mL