

A1BG Recombinant Matched Antibody Pair, PBS Only

Catalog Number:MP02261-1

Capture Antibody Information

Catalog Number: 86112-2-PBS	Clone ID: 250024E6	Conjugate: Unconjugated
Host: Rabbit	Reactivity: human	Full name: alpha-1-B glycoprotein
Isotype: IgG	GenBank: NM_130786.4	Gene ID: 1
Purification Method: Protein A purification	Immunogen Catalog Number: Eg1511	

Detection Antibody Information

Catalog Number: 86112-1-PBS	Clone ID: 250024H3	Conjugate: Unconjugated
Host: Rabbit	Reactivity: human	Full name: alpha-1-B glycoprotein
Isotype: IgG	GenBank: NM_130786.4	Gene ID: 1
Purification Method: Protein A purification	Immunogen Catalog Number: Eg1511	

Applications

Tested Applications: Cytometric bead array	Range: 1.563-100 ng/mL (Cytometric Bead Array)	Recommended Dilutions: It is recommended that this reagent should be titrated in each testing system to obtain optimal results.
---	---	--

Product Information

MP02261-1 targets A1BG in immunoassays as a matched antibody pair. Validated in Cytometric bead array.

Capture antibody: A1BG Recombinant antibody, PBS Only (Capture) 86112-2-PBS (250024E6). 100 µg. Concentration 1 mg/mL.

Detection antibody: A1BG Recombinant antibody, PBS Only (Detector) 86112-1-PBS (250024H3). 100 µg. Concentration 1 mg/mL.

Unconjugated rabbit recombinant monoclonal antibody pair in PBS only storage buffer at a concentration of 1 mg/mL, ready for conjugation. Created using Proteintech's proprietary in-house recombinant technology. Recombinant production enables unrivalled batch-to-batch consistency, easy scale-up, and future security of supply.

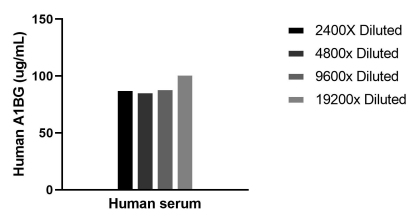
Matched antibody pairs are designed for use in a variety of assays and platforms that require matched antibody pairs.

Antibody use should be optimized for each application and assay.

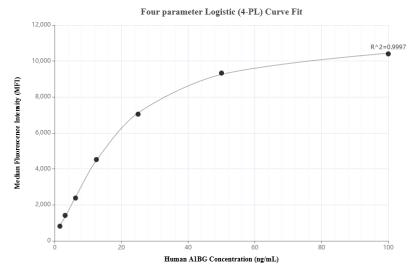
Storage

Storage:
Store at -80°C.
The product is shipped with ice packs. Upon receipt, store it immediately at -80°C
Storage buffer:
PBS only

Selected Validation Data



The mean A1BG concentration was determined to be 91.4 ug/mL in human serum.



Cytometric bead array standard curve of MP02261-1, A1BG Recombinant Matched Antibody Pair, PBS Only. Capture antibody: 86112-2-PBS. Detection antibody: 86112-1-PBS. Standard: Eg1511. Range: 1.563-100 ng/mL