

Mouse LCAT Recombinant Matched Antibody Pair, PBS Only

Catalog Number: MP02258-1

Capture Antibody Information

Catalog Number:
86041-2-PBS
Host:
Rabbit
Isotype:
IgG
Purification Method:
Protein A purification

Clone ID:
250320A5
Reactivity:
mouse
GenBank:
NM_008490.2
Immunogen Catalog Number:
Eg2756

Conjugate:
Unconjugated
Full name:
lecithin cholesterol acyltransferase
Gene ID:
16816

Detection Antibody Information

Catalog Number:
86041-1-PBS
Host:
Rabbit
Isotype:
IgG
Purification Method:
Protein A purification

Clone ID:
250320E2
Reactivity:
mouse
GenBank:
NM_008490.2
Immunogen Catalog Number:
Eg2756

Conjugate:
Unconjugated
Full name:
lecithin cholesterol acyltransferase
Gene ID:
16816

Applications

Tested Applications:
Cytometric bead array

Range:
0.781-100 ng/mL (Cytometric Bead Array)

Recommended Dilutions:
It is recommended that this reagent should be titrated in each testing system to obtain optimal results.

Product Information

MP02258-1 targets LCAT in immunoassays as a matched antibody pair. Validated in Cytometric bead array.

Capture antibody: Mouse Lcat Recombinant antibody, PBS Only (Capture) 86041-2-PBS (250320A5). 100 µg. Concentration 1 mg/mL.

Detection antibody: Mouse Lcat Recombinant antibody, PBS Only (Detector) 86041-1-PBS (250320E2). 100 µg. Concentration 1 mg/mL.

Unconjugated rabbit recombinant monoclonal antibody pair in PBS only storage buffer at a concentration of 1 mg/mL, ready for conjugation. Created using Proteintech's proprietary in-house recombinant technology. Recombinant production enables unrivalled batch-to-batch consistency, easy scale-up, and future security of supply.

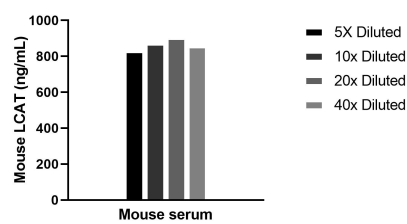
Matched antibody pairs are designed for use in a variety of assays and platforms that require matched antibody pairs.

Antibody use should be optimized for each application and assay.

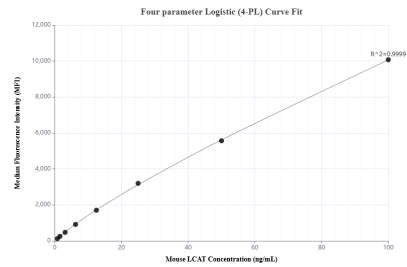
Storage

Storage:
Store at -80°C.
The product is shipped with ice packs. Upon receipt, store it immediately at -80°C
Storage buffer:
PBS only

Selected Validation Data



The mean LCAT concentration was determined to be 863.3 ng/mL in mouse serum.



Cytometric bead array standard curve of MP02258-1, MOUSE LCAT Recombinant Matched Antibody Pair, PBS Only. Capture antibody: 86041-2-PBS. Detection antibody: 86041-1-PBS. Standard: Eg2756. Range: 0.781-100 ng/mL