

# MMP2 Recombinant Matched Antibody Pair, PBS Only

Catalog Number: **MP02255-1**

## Capture Antibody Information

**Catalog Number:**  
81515-4-PBS  
**Host:**  
Rabbit  
**Isotype:**  
IgG  
**Purification Method:**  
Protein A purification

**Clone ID:**  
250316H2  
**Reactivity:**  
human  
**GenBank:**  
BC002576  
**Immunogen Catalog Number:**  
Eg1650

**Conjugate:**  
Unconjugated  
**Full name:**  
matrix metalloproteinase 2  
(gelatinase A, 72kDa gelatinase,  
72kDa type IV collagenase)  
**Gene ID:**  
4313

## Detection Antibody Information

**Catalog Number:**  
81515-3-PBS  
**Host:**  
Rabbit  
**Isotype:**  
IgG  
**Purification Method:**  
Protein A purification

**Clone ID:**  
250316D7  
**Reactivity:**  
human  
**GenBank:**  
BC002576  
**Immunogen Catalog Number:**  
Eg1650

**Conjugate:**  
Unconjugated  
**Full name:**  
matrix metalloproteinase 2  
(gelatinase A, 72kDa gelatinase,  
72kDa type IV collagenase)  
**Gene ID:**  
4313

## Applications

**Tested Applications:**  
Cytometric bead array

**Range:**  
1.563-200 ng/mL (Cytometric Bead Array)

**Recommended Dilutions:**  
It is recommended that this reagent should be titrated in each testing system to obtain optimal results.

## Product Information

MP02255-1 targets MMP2 in immunoassays as a matched antibody pair. Validated in Cytometric bead array.

Capture antibody: MMP2 Recombinant antibody, PBS Only (Capture) 81515-4-PBS (250316H2). 100 µg. Concentration 1 mg/mL.

Detection antibody: MMP2 Recombinant antibody, PBS Only (Detector) 81515-3-PBS (250316D7). 100 µg. Concentration 1 mg/mL.

Unconjugated rabbit recombinant monoclonal antibody pair in PBS only storage buffer at a concentration of 1 mg/mL, ready for conjugation. Created using Proteintech's proprietary in-house recombinant technology. Recombinant production enables unrivalled batch-to-batch consistency, easy scale-up, and future security of supply.

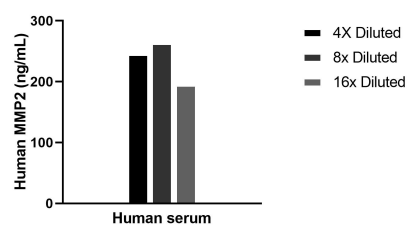
Matched antibody pairs are designed for use in a variety of assays and platforms that require matched antibody pairs.

Antibody use should be optimized for each application and assay.

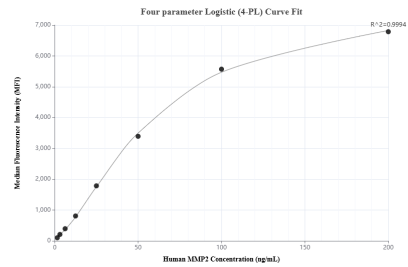
## Storage

**Storage:**  
Store at -80°C.  
**The product is shipped with ice packs. Upon receipt, store it immediately at -80°C**  
**Storage buffer:**  
PBS only

# Selected Validation Data



The mean MMP2 concentration was determined to be 234.5 ng/mL in human serum.



Cytometric bead array standard curve of MP02255-1, MMP2 Recombinant Matched Antibody Pair, PBS Only. Capture antibody: 81515-4-PBS. Detection antibody: 81515-3-PBS. Standard: Eg1650. Range: 1.563-200 ng/mL.