

LILRB2 Recombinant Matched Antibody Pair, PBS Only

Catalog Number: **MP02254-1**

Capture Antibody Information

Catalog Number:
86066-2-PBS

Host:
Rabbit

Isotype:
IgG

Purification Method:
Protein A purification

Clone ID:
250299B4

Reactivity:
human

GenBank:
NM_005874.4

Immunogen Catalog Number:
Eg2839

Conjugate:
Unconjugated

Full name:
leukocyte immunoglobulin-like receptor, subfamily B (with TM and ITIM domains), member 2

Gene ID:
10288

Detection Antibody Information

Catalog Number:
86066-1-PBS

Host:
Rabbit

Isotype:
IgG

Purification Method:
Protein A purification

Clone ID:
250299A2

Reactivity:
human

GenBank:
NM_005874.4

Immunogen Catalog Number:
Eg2839

Conjugate:
Unconjugated

Full name:
leukocyte immunoglobulin-like receptor, subfamily B (with TM and ITIM domains), member 2

Gene ID:
10288

Applications

Tested Applications:
Cytometric bead array

Range:
0.781-50 ng/mL (Cytometric Bead Array)

Recommended Dilutions:
It is recommended that this reagent should be titrated in each testing system to obtain optimal results.

Product Information

MP02254-1 targets LILRB2 in immunoassays as a matched antibody pair. Validated in Cytometric bead array.

Capture antibody: LILRB2 Recombinant antibody, PBS Only (Capture) 86066-2-PBS (250299B4). 100 µg. Concentration 1 mg/mL.

Detection antibody: LILRB2 Recombinant antibody, PBS Only (Detector) 86066-1-PBS (250299A2). 100 µg. Concentration 1 mg/mL.

Unconjugated rabbit recombinant monoclonal antibody pair in PBS only storage buffer at a concentration of 1 mg/mL, ready for conjugation. Created using Proteintech's proprietary in-house recombinant technology. Recombinant production enables unrivalled batch-to-batch consistency, easy scale-up, and future security of supply.

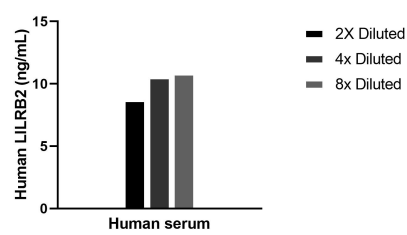
Matched antibody pairs are designed for use in a variety of assays and platforms that require matched antibody pairs.

Antibody use should be optimized for each application and assay.

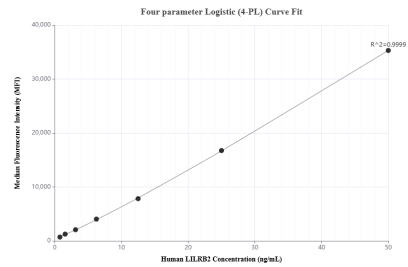
Storage

Storage:
Store at -80°C.
The product is shipped with ice packs. Upon receipt, store it immediately at -80°C
Storage buffer:
PBS only

Selected Validation Data



The mean LILRB2 concentration was determined to be 10.0 ng/mL in human serum.



Cytometric bead array standard curve of MP02254-1, LILRB2 Recombinant Matched Antibody Pair, PBS Only. Capture antibody: 86066-2-PBS. Detection antibody: 86066-1-PBS. Standard: Eg2839. Range: 0.781-50 ng/mL.