

# CD55 Recombinant Matched Antibody Pair, PBS Only

Catalog Number: **MP02253-2**

## Capture Antibody Information

<b>Catalog Number:</b> 82781-10-PBS	<b>Clone ID:</b> 250682B3	<b>Conjugate:</b> Unconjugated
<b>Host:</b> Rabbit	<b>Reactivity:</b> human	<b>Full name:</b> CD55 molecule, decay accelerating factor for complement (Cromer blood group)
<b>Isotype:</b> IgG	<b>GenBank:</b> BC001288	<b>Gene ID:</b> 1604
<b>Purification Method:</b> Protein A purification	<b>Immunogen Catalog Number:</b> Eg4246	

## Detection Antibody Information

<b>Catalog Number:</b> 82781-8-PBS	<b>Clone ID:</b> 250682F3	<b>Conjugate:</b> Unconjugated
<b>Host:</b> Rabbit	<b>Reactivity:</b> human	<b>Full name:</b> CD55 molecule, decay accelerating factor for complement (Cromer blood group)
<b>Isotype:</b> IgG	<b>GenBank:</b> BC001288	<b>Gene ID:</b> 1604
<b>Purification Method:</b> Protein A purification	<b>Immunogen Catalog Number:</b> Eg4246	

## Applications

<b>Tested Applications:</b> Sandwich ELISA	<b>Range:</b> 78.1-5000 pg/mL (Sandwich ELISA)	<b>Recommended Dilutions:</b> It is recommended that this reagent should be titrated in each testing system to obtain optimal results.
---	---	---

## Product Information

MP02253-2 targets CD55 in immunoassays as a matched antibody pair. Validated in Sandwich ELISA.

Capture antibody: CD55 Recombinant antibody, PBS Only (Capture) 82781-10-PBS (250682B3). 100 µg. Concentration 1 mg/mL.

Detection antibody: CD55 Recombinant antibody, PBS Only (Detector) 82781-8-PBS (250682F3). 100 µg. Concentration 1 mg/mL.

Unconjugated rabbit recombinant monoclonal antibody pair in PBS only storage buffer at a concentration of 1 mg/mL, ready for conjugation. Created using Proteintech's proprietary in-house recombinant technology. Recombinant production enables unrivalled batch-to-batch consistency, easy scale-up, and future security of supply.

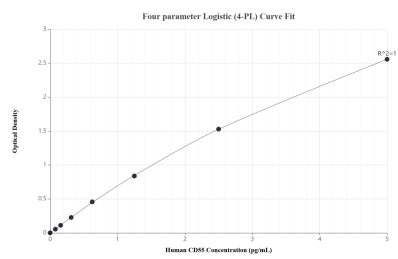
Matched antibody pairs are designed for use in a variety of assays and platforms that require matched antibody pairs.

Antibody use should be optimized for each application and assay.

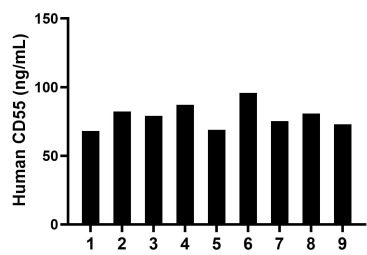
## Storage

**Storage:**  
Store at -80°C.  
**The product is shipped with ice packs. Upon receipt, store it immediately at -80°C**  
**Storage buffer:**  
PBS only

## Selected Validation Data



Sandwich ELISA standard curve of MP02253-2, Human CD55 Recombinant Matched Antibody Pair - PBS only. 82781-10-PBS was coated to a plate as the capture antibody and incubated with serial dilutions of standard Eg4246. 82781-8-PBS was HRP conjugated as the detection antibody. Range: 78.1-5000 pg/mL



Plasma of nine individual healthy human donors was measured. The CD55 concentration of detected samples was determined to be 78.9 ng/mL with a range of 68.2-95.8 ng/mL