

For Research Use Only

Serpin C1/Antithrombin III Recombinant Matched Antibody Pair, PBS Only



Catalog Number:MP02252-2

Capture Antibody Information

Catalog Number:
86067-2-PBS
Host:
Rabbit
Isotype:
IgG
Purification Method:
Protein A purification

Clone ID:
250574C5
Reactivity:
human
GenBank:
NM_000488.4
Immunogen Catalog Number:
Eg3100

Conjugate:
Unconjugated
Full name:
serpin peptidase inhibitor, clade C
(antithrombin), member 1
Gene ID:
462

Detection Antibody Information

Catalog Number:
86067-3-PBS
Host:
Rabbit
Isotype:
IgG
Purification Method:
Protein A purification

Clone ID:
250574C9
Reactivity:
human
GenBank:
NM_000488.4
Immunogen Catalog Number:
Eg3100

Conjugate:
Unconjugated
Full name:
serpin peptidase inhibitor, clade C
(antithrombin), member 1
Gene ID:
462

Applications

Tested Applications:
Sandwich ELISA

Range:
0.313-20 ng/mL (Sandwich ELISA)

Recommended Dilutions:
It is recommended that this reagent should be titrated in each testing system to obtain optimal results.

Product Information

MP02252-2 targets Serpin C1/Antithrombin III in immunoassays as a matched antibody pair. Validated in Sandwich ELISA.

Capture antibody: Serpin C1/Antithrombin III Recombinant monoclonal antibody, PBS Only (Capture) 86067-2-PBS (250574C5). 100 µg. Concentration 1 mg/mL.

Detection antibody: Serpin C1/Antithrombin III Recombinant monoclonal antibody, PBS Only (Detector) 86067-3-PBS (250574C9). 100 µg. Concentration 1 mg/mL.

Unconjugated rabbit recombinant monoclonal antibody pair in PBS only storage buffer at a concentration of 1 mg/mL, ready for conjugation. Created using Proteintech's proprietary in-house recombinant technology. Recombinant production enables unrivalled batch-to-batch consistency, easy scale-up, and future security of supply.

Matched antibody pairs are designed for use in a variety of assays and platforms that require matched antibody pairs.

Antibody use should be optimized for each application and assay.

Storage

Storage:
Store at -80°C.

The product is shipped with ice packs. Upon receipt, store it immediately at -80°C

Storage buffer:
PBS only

For technical support and original validation data for this product please contact:

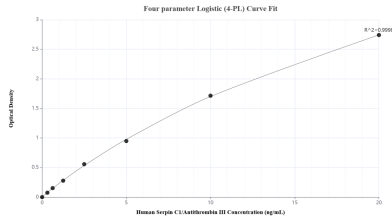
T: 4006900926

E: Proteintech-CN@ptglab.com

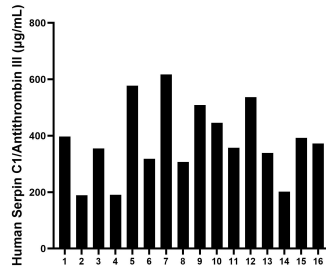
W: ptgcn.com

This product is exclusively available under Proteintech Group brand and is not available to purchase from any other manufacturer.

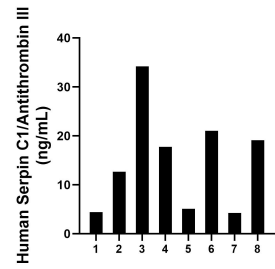
Selected Validation Data



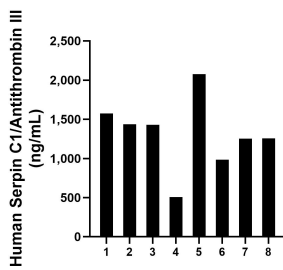
Sandwich ELISA standard curve of MP02252-2, Human Serpin C1/Antithrombin III Recombinant Matched Antibody Pair - PBS only. 86067-2-PBS was coated to a plate as the capture antibody and incubated with serial dilutions of standard Eg3100. 86067-3-PBS was HRP conjugated as the detection antibody. Range: 0.313-20 ng/mL



Serum of sixteen individual healthy human donors was measured. The Serpin C1/Antithrombin III concentration of detected samples was determined to be 381.81 µg/mL with a range of 189.31-617.31 µg/mL



Urine of eight individual healthy human donors was measured. The Serpin C1/Antithrombin III concentration of detected samples was determined to be 14.82 ng/mL with a range of 4.28-34.20 ng/mL



Human milk of eight individual healthy human donors was measured. The Serpin C1/Antithrombin III concentration of detected samples was determined to be 1,313.73 ng/mL with a range of 505.80-2,074.98 ng/mL