

IRF2BP1 Recombinant Matched Antibody Pair, PBS Only

Catalog Number: **MP02247-1**

Capture Antibody Information

Catalog Number:
86048-3-PBS
Host:
Rabbit
Isotype:
IgG
Purification Method:
Protein A purification

Clone ID:
250630B3
Reactivity:
human
GenBank:
BC038222
Immunogen Catalog Number:
Ag4596

Conjugate:
Unconjugated
Full name:
interferon regulatory factor 2 binding protein 1
Gene ID:
26145

Detection Antibody Information

Catalog Number:
86048-2-PBS
Host:
Rabbit
Isotype:
IgG
Purification Method:
Protein A purification

Clone ID:
250630G11
Reactivity:
human
GenBank:
BC038222
Immunogen Catalog Number:
Ag4596

Conjugate:
Unconjugated
Full name:
interferon regulatory factor 2 binding protein 1
Gene ID:
26145

Applications

Tested Applications:
Cytometric bead array

Range:
0.781-100 ng/mL (Cytometric Bead Array)

Recommended Dilutions:
It is recommended that this reagent should be titrated in each testing system to obtain optimal results.

Product Information

MP02247-1 targets IRF2BP1 in immunoassays as a matched antibody pair. Validated in Cytometric bead array.

Capture antibody: IRF2BP1 Recombinant antibody, PBS Only (Capture) 86048-3-PBS (250630B3). 100 µg. Concentration 1 mg/mL.

Detection antibody: IRF2BP1 Recombinant antibody, PBS Only (Detector) 86048-2-PBS (250630G11). 100 µg. Concentration 1 mg/mL.

Unconjugated rabbit recombinant monoclonal antibody pair in PBS only storage buffer at a concentration of 1 mg/mL, ready for conjugation. Created using Proteintech's proprietary in-house recombinant technology. Recombinant production enables unrivalled batch-to-batch consistency, easy scale-up, and future security of supply.

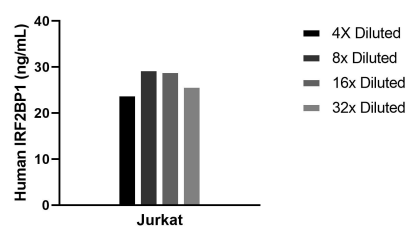
Matched antibody pairs are designed for use in a variety of assays and platforms that require matched antibody pairs.

Antibody use should be optimized for each application and assay.

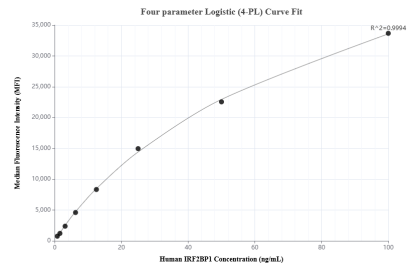
Storage

Storage:
Store at -80°C.
The product is shipped with ice packs. Upon receipt, store it immediately at -80°C
Storage buffer:
PBS only

Selected Validation Data



The mean IRF2BP1 concentration was determined to be 27.1 ng/mL in Jurkat cell extract based on a 2.0 mg/mL extract load.



Cytometric bead array standard curve of MP02247-1, IRF2BP1 Recombinant Matched Antibody Pair, PBS Only. Capture antibody: 86048-3-PBS. Detection antibody: 86048-2-PBS. Standard: Ag4596. Range: 0.781-100 ng/mL.