

WTAP Recombinant Matched Antibody Pair, PBS Only

Catalog Number: **MP02241-2**

Capture Antibody Information

Catalog Number: 81987-3-PBS	Clone ID: 250657H6	Conjugate: Unconjugated
Host: Rabbit	Reactivity: human	Full name: Wilms tumor 1 associated protein
Isotype: IgG	GenBank: BC000383	Gene ID: 9589
Purification Method: Protein A purification	Immunogen Catalog Number: Ag0259	

Detection Antibody Information

Catalog Number: 81987-5-PBS	Clone ID: 250657B12	Conjugate: Unconjugated
Host: Rabbit	Reactivity: human	Full name: Wilms tumor 1 associated protein
Isotype: IgG	GenBank: BC000383	Gene ID: 9589
Purification Method: Protein A purification	Immunogen Catalog Number: Ag0259	

Applications

Tested Applications: Sandwich ELISA	Range: 1.56-100 ng/mL (Sandwich ELISA)	Recommended Dilutions: It is recommended that this reagent should be titrated in each testing system to obtain optimal results.
---	--	---

Product Information

MP02241-2 targets WTAP in immunoassays as a matched antibody pair. Validated in Sandwich ELISA.

Capture antibody: WTAP Recombinant antibody, PBS Only (Capture) 81987-3-PBS (250657H6). 100 µg. Concentration 1 mg/mL.

Detection antibody: WTAP Recombinant antibody, PBS Only (Detector) 81987-5-PBS (250657B12). 100 µg. Concentration 1 mg/mL.

Unconjugated rabbit recombinant monoclonal antibody pair in PBS only storage buffer at a concentration of 1 mg/mL, ready for conjugation. Created using Proteintech's proprietary in-house recombinant technology. Recombinant production enables unrivalled batch-to-batch consistency, easy scale-up, and future security of supply.

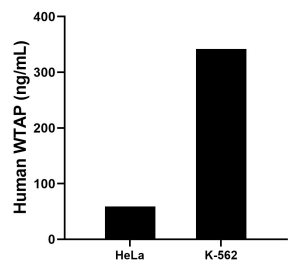
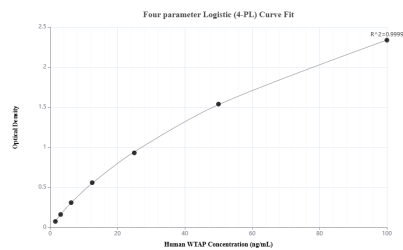
Matched antibody pairs are designed for use in a variety of assays and platforms that require matched antibody pairs.

Antibody use should be optimized for each application and assay.

Storage

Storage:
Store at -80°C.
The product is shipped with ice packs. Upon receipt, store it immediately at -80°C
Storage buffer:
PBS only

Selected Validation Data



Sandwich ELISA standard curve of MP02241-2, Human WTAP Recombinant Matched Antibody Pair - PBS only. 81987-3-PBS was coated to a plate as the capture antibody and incubated with serial dilutions of standard Ag0259. 81987-5-PBS was HRP conjugated as the detection antibody. Range: 1.56-100 ng/mL

The mean WTAP concentration was determined to be 59.04 ng/mL in HeLa cell extract based on a 1.3 mg/mL extract load and 341.94 ng/mL in K-562 cell extract based on a 2.5 mg/mL extract load.