

LECT2 Recombinant Matched Antibody Pair, PBS Only

Catalog Number: **MP02238-2**

Capture Antibody Information

Catalog Number: 85970-2-PBS	Clone ID: 250102G11	Conjugate: Unconjugated
Host: Rabbit	Reactivity: human	Full name: leukocyte cell-derived chemotaxin 2
Isotype: IgG	GenBank: NM_002302.2	Gene ID: 3950
Purification Method: Protein A purification	Immunogen Catalog Number: Eg3137	

Detection Antibody Information

Catalog Number: 85970-4-PBS	Clone ID: 250102H3	Conjugate: Unconjugated
Host: Rabbit	Reactivity: human	Full name: leukocyte cell-derived chemotaxin 2
Isotype: IgG	GenBank: NM_002302.2	Gene ID: 3950
Purification Method: Protein A purification	Immunogen Catalog Number: Eg3137	

Applications

Tested Applications: Sandwich ELISA	Range: 39.1-2500 pg/mL (Sandwich ELISA)	Recommended Dilutions: It is recommended that this reagent should be titrated in each testing system to obtain optimal results.
---	---	---

Product Information

MP02238-2 targets LECT2 in immunoassays as a matched antibody pair. Validated in Sandwich ELISA.

Capture antibody: LECT2 Recombinant antibody, PBS Only (Capture) 85970-2-PBS (250102G11). 100 µg. Concentration 1 mg/mL.

Detection antibody: LECT2 Recombinant antibody, PBS Only (Detector) 85970-4-PBS (250102H3). 100 µg. Concentration 1 mg/mL.

Unconjugated rabbit recombinant monoclonal antibody pair in PBS only storage buffer at a concentration of 1 mg/mL, ready for conjugation. Created using Proteintech's proprietary in-house recombinant technology. Recombinant production enables unrivalled batch-to-batch consistency, easy scale-up, and future security of supply.

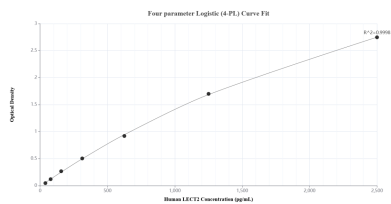
Matched antibody pairs are designed for use in a variety of assays and platforms that require matched antibody pairs.

Antibody use should be optimized for each application and assay.

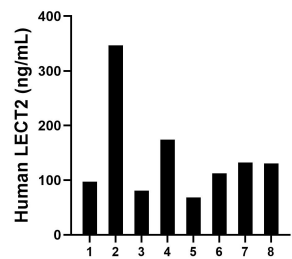
Storage

Storage:
Store at -80°C.
The product is shipped with ice packs. Upon receipt, store it immediately at -80°C
Storage buffer:
PBS only

Selected Validation Data



Sandwich ELISA standard curve of MP02238-2, Human LECT2 Recombinant Matched Antibody Pair - PBS only. 85970-2-PBS was coated to a plate as the capture antibody and incubated with serial dilutions of standard Eg3137. 85970-4-PBS was HRP conjugated as the detection antibody. Range: 39.1-2500 pg/mL.



Serum of eight individual healthy human donors was measured. The LECT2 concentration of detected samples was determined to be 146.6 ng/mL with a range of 68.1-346.5 ng/mL.