

Mouse S100A8 Recombinant Matched Antibody Pair, PBS Only

Catalog Number: **MP02237-1**

Capture Antibody Information

Catalog Number:
85972-2-PBS
Host:
Rabbit
Isotype:
IgG
Purification Method:
Protein A purification

Clone ID:
250113D6
Reactivity:
mouse
GenBank:
NM_013650.2
Immunogen Catalog Number:
Eg2959

Conjugate:
Unconjugated
Full name:
S100 calcium binding protein A8
(calgranulin A)
Gene ID:
20201

Detection Antibody Information

Catalog Number:
85972-1-PBS
Host:
Rabbit
Isotype:
IgG
Purification Method:
Protein A purification

Clone ID:
250113B2
Reactivity:
mouse
GenBank:
NM_013650.2
Immunogen Catalog Number:
Eg2959

Conjugate:
Unconjugated
Full name:
S100 calcium binding protein A8
(calgranulin A)
Gene ID:
20201

Applications

Tested Applications:
Cytometric bead array

Range:
1.563-100 ng/mL (Cytometric Bead Array)

Recommended Dilutions:
It is recommended that this reagent should be titrated in each testing system to obtain optimal results.

Product Information

MP02237-1 targets S100A8 in immunoassays as a matched antibody pair. Validated in Cytometric bead array.

Capture antibody: Mouse S100a8 Recombinant antibody, PBS Only (Capture) 85972-2-PBS (250113D6). 100 µg. Concentration 1 mg/mL.

Detection antibody: Mouse S100a8 Recombinant antibody, PBS Only (Detector) 85972-1-PBS (250113B2). 100 µg. Concentration 1 mg/mL.

Unconjugated rabbit recombinant monoclonal antibody pair in PBS only storage buffer at a concentration of 1 mg/mL, ready for conjugation. Created using Proteintech's proprietary in-house recombinant technology. Recombinant production enables unrivalled batch-to-batch consistency, easy scale-up, and future security of supply.

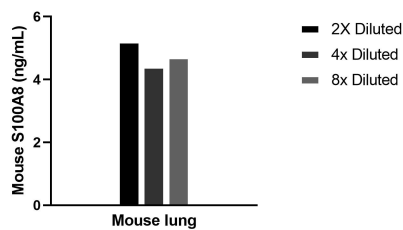
Matched antibody pairs are designed for use in a variety of assays and platforms that require matched antibody pairs.

Antibody use should be optimized for each application and assay.

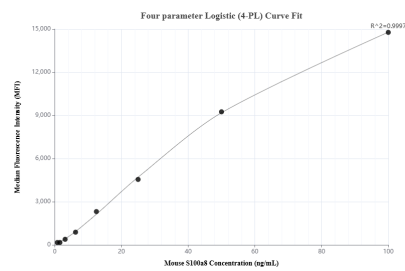
Storage

Storage:
Store at -80°C.
The product is shipped with ice packs. Upon receipt, store it immediately at -80°C
Storage buffer:
PBS only

Selected Validation Data



Mouse lung conditioned media cultured in RPMI supplemented with 10% fetal bovine serum was collected after culturing for 5 days. An aliquot of the cell culture supernate was removed, assayed for mouse S100A8 and measured 4.7 ng/mL



Cytometric bead array standard curve of MP02237-1, MOUSE S100A8 Recombinant Matched Antibody Pair, PBS Only. Capture antibody: 85972-2-PBS. Detection antibody: 85972-1-PBS. Standard: Eg2959. Range: 1.563-100 ng/mL