

# CD85j / LILRB1 Recombinant Matched Antibody Pair, PBS Only

Catalog Number: **MP02236-1**

## Capture Antibody Information

**Catalog Number:**  
85975-2-PBS

**Host:**  
Rabbit

**Isotype:**  
IgG

**Purification Method:**  
Protein A purification

**Clone ID:**  
250502A2

**Reactivity:**  
human

**GenBank:**  
BC015731

**Immunogen Catalog Number:**  
Eg3701

**Conjugate:**  
Unconjugated

**Full name:**  
leukocyte immunoglobulin-like  
receptor, subfamily B (with TM and  
ITIM domains), member 1

**Gene ID:**  
10859

## Detection Antibody Information

**Catalog Number:**  
85975-1-PBS

**Host:**  
Rabbit

**Isotype:**  
IgG

**Purification Method:**  
Protein A purification

**Clone ID:**  
250502A6

**Reactivity:**  
human

**GenBank:**  
BC015731

**Immunogen Catalog Number:**  
Eg3701

**Conjugate:**  
Unconjugated

**Full name:**  
leukocyte immunoglobulin-like  
receptor, subfamily B (with TM and  
ITIM domains), member 1

**Gene ID:**  
10859

## Applications

**Tested Applications:**  
Cytometric bead array

**Range:**  
0.313-40 ng/mL (Cytometric Bead  
Array)

**Recommended Dilutions:**  
It is recommended that this reagent  
should be titrated in each testing  
system to obtain optimal results.

## Product Information

MP02236-1 targets CD85j / LILRB1 in immunoassays as a matched antibody pair. Validated in Cytometric bead array.

Capture antibody: CD85j / LILRB1 Recombinant antibody, PBS Only (Capture) 85975-2-PBS (250502A2). 100 µg. Concentration 1 mg/mL.

Detection antibody: CD85j / LILRB1 Recombinant antibody, PBS Only (Detector) 85975-1-PBS (250502A6). 100 µg. Concentration 1 mg/mL.

Unconjugated rabbit recombinant monoclonal antibody pair in PBS only storage buffer at a concentration of 1 mg/mL, ready for conjugation. Created using Proteintech's proprietary in-house recombinant technology. Recombinant production enables unrivalled batch-to-batch consistency, easy scale-up, and future security of supply.

Matched antibody pairs are designed for use in a variety of assays and platforms that require matched antibody pairs.

Antibody use should be optimized for each application and assay.

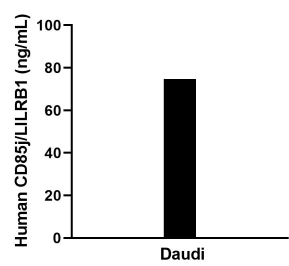
## Storage

**Storage:**  
Store at -80°C.

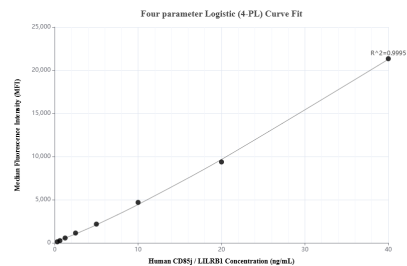
**The product is shipped with ice packs. Upon receipt, store it immediately at -80°C**

**Storage buffer:**  
PBS only

## Selected Validation Data



The mean CD85j / LILRB1 concentration was determined to be 75.7 ng/mL in Daudi cell extract based on a 1.5 mg/mL extract load.



Cytometric bead array standard curve of MP02236-1, CD85j / LILRB1 Recombinant Matched Antibody Pair, PBS Only. Capture antibody: 85975-2-PBS. Detection antibody: 85975-1-PBS. Standard: Eg3701. Range: 0.313-40 ng/mL.