

FGF2 Recombinant Matched Antibody Pair, PBS Only

Catalog Number: **MP02231-1**

Capture Antibody Information

Catalog Number:
85284-3-PBS
Host:
Rabbit
Isotype:
IgG
Purification Method:
Protein A purification

Clone ID:
250430E10
Reactivity:
human
GenBank:
Immunogen Catalog Number:
HZ-1285

Conjugate:
Unconjugated
Full name:
fibroblast growth factor 2 (basic)
Gene ID:
2247

Detection Antibody Information

Catalog Number:
85284-2-PBS
Host:
Rabbit
Isotype:
IgG
Purification Method:
Protein A purification

Clone ID:
250430E5
Reactivity:
human
GenBank:
Immunogen Catalog Number:
HZ-1285

Conjugate:
Unconjugated
Full name:
fibroblast growth factor 2 (basic)
Gene ID:
2247

Applications

Tested Applications:
Cytometric bead array

Range:
0.781-50 ng/mL (Cytometric Bead Array)

Recommended Dilutions:
It is recommended that this reagent should be titrated in each testing system to obtain optimal results.

Product Information

MP02231-1 targets FGF2 in immunoassays as a matched antibody pair. Validated in Cytometric bead array.

Capture antibody: FGFBasic-TS Recombinant antibody, PBS Only (Capture) 85284-3-PBS (250430E10). 100 µg. Concentration 1 mg/mL.

Detection antibody: FGFBasic-TS Recombinant antibody, PBS Only (Detector) 85284-2-PBS (250430E5). 100 µg. Concentration 1 mg/mL.

Unconjugated rabbit recombinant monoclonal antibody pair in PBS only storage buffer at a concentration of 1 mg/mL, ready for conjugation. Created using Proteintech's proprietary in-house recombinant technology. Recombinant production enables unrivalled batch-to-batch consistency, easy scale-up, and future security of supply.

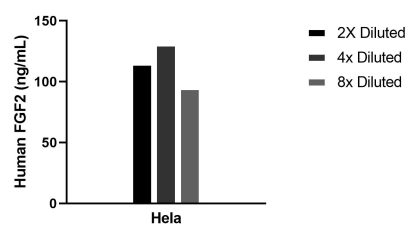
Matched antibody pairs are designed for use in a variety of assays and platforms that require matched antibody pairs.

Antibody use should be optimized for each application and assay.

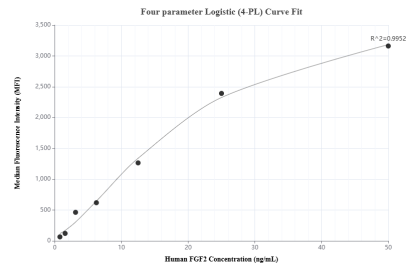
Storage

Storage:
Store at -80°C.
The product is shipped with ice packs. Upon receipt, store it immediately at -80°C
Storage buffer:
PBS only

Selected Validation Data



The mean FGF2 concentration was determined to be 113.2 ng/mL in HeLa cell extract based on a 1.3 mg/mL extract load.



Cytometric bead array standard curve of MP02231-1, FGF2 Recombinant Matched Antibody Pair, PBS Only. Capture antibody: 85284-3-PBS. Detection antibody: 85284-2-PBS. Standard: HZ-1285. Range: 0.781-50 ng/mL.