

Mouse CCL9/10/MIP-1 gamma Recombinant Matched Antibody Pair, PBS Only

Catalog Number: **MP02230-1**

Capture Antibody Information

Catalog Number: 86002-2-PBS	Clone ID: 243103H5	Conjugate: Unconjugated
Host: Rabbit	Reactivity: mouse	Full name: chemokine (C-C motif) ligand 9
Isotype: IgG	GenBank: NM_011338.2	Gene ID: 20308
Purification Method: Protein A purification	Immunogen Catalog Number: Eg3336	

Detection Antibody Information

Catalog Number: 86002-1-PBS	Clone ID: 243103F7	Conjugate: Unconjugated
Host: Rabbit	Reactivity: mouse	Full name: chemokine (C-C motif) ligand 9
Isotype: IgG	GenBank: NM_011338.2	Gene ID: 20308
Purification Method: Protein A purification	Immunogen Catalog Number: Eg3336	

Applications

Tested Applications: Cytometric bead array	Range: 1.563-100 ng/mL (Cytometric Bead Array)	Recommended Dilutions: It is recommended that this reagent should be titrated in each testing system to obtain optimal results.
---	---	--

Product Information

MP02230-1 targets CCL9/10/MIP-1 gamma in immunoassays as a matched antibody pair. Validated in Cytometric bead array.

Capture antibody: Mouse Ccl9 Recombinant antibody, PBS Only (Capture) 86002-2-PBS (243103H5). 100 µg. Concentration 1 mg/mL.

Detection antibody: Mouse Ccl9 Recombinant antibody, PBS Only (Detector) 86002-1-PBS (243103F7). 100 µg. Concentration 1 mg/mL.

Unconjugated rabbit recombinant monoclonal antibody pair in PBS only storage buffer at a concentration of 1 mg/mL, ready for conjugation. Created using Proteintech's proprietary in-house recombinant technology. Recombinant production enables unrivalled batch-to-batch consistency, easy scale-up, and future security of supply.

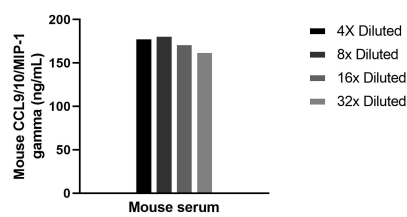
Matched antibody pairs are designed for use in a variety of assays and platforms that require matched antibody pairs.

Antibody use should be optimized for each application and assay.

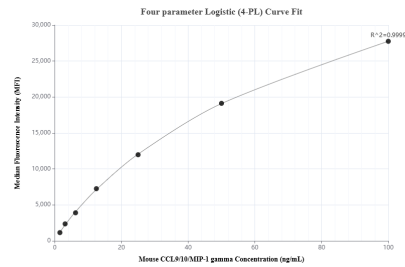
Storage

Storage:
Store at -80°C.
The product is shipped with ice packs. Upon receipt, store it immediately at -80°C
Storage buffer:
PBS only

Selected Validation Data



The mean CCL9/10/MIP-1 gamma concentration was determined to be 174.4 ng/mL in mouse serum.



Cytometric bead array standard curve of MP02230-1, MOUSE CCL9/10/MIP-1 gamma Recombinant Matched Antibody Pair, PBS Only. Capture antibody: 86002-2-PBS. Detection antibody: 86002-1-PBS. Standard: Eg3336. Range: 1.563-100 ng/mL.