

Properdin/PFC Recombinant Matched Antibody Pair, PBS Only

Catalog Number: **MP02228-2**

Capture Antibody Information

Catalog Number: 85999-5-PBS	Clone ID: 250654F8	Conjugate: Unconjugated
Host: Rabbit	Reactivity: human	Full name: complement factor properdin
Isotype: IgG	GenBank: BC015756	Gene ID: 5199
Purification Method: Protein A purification	Immunogen Catalog Number: Eg2219	

Detection Antibody Information

Catalog Number: 85999-4-PBS	Clone ID: 250654D5	Conjugate: Unconjugated
Host: Rabbit	Reactivity: human	Full name: complement factor properdin
Isotype: IgG	GenBank: BC015756	Gene ID: 5199
Purification Method: Protein A purification	Immunogen Catalog Number: Eg2219	

Applications

Tested Applications: Sandwich ELISA	Range: 62.5-4000 pg/mL (Sandwich ELISA)	Recommended Dilutions: It is recommended that this reagent should be titrated in each testing system to obtain optimal results.
--	--	--

Product Information

MP02228-2 targets Properdin/PFC in immunoassays as a matched antibody pair. Validated in Sandwich ELISA.

Capture antibody: CFP Recombinant antibody, PBS Only (Capture) 85999-5-PBS (250654F8). 100 µg. Concentration 1 mg/mL.

Detection antibody: CFP Recombinant antibody, PBS Only (Detector) 85999-4-PBS (250654D5). 100 µg. Concentration 1 mg/mL.

Unconjugated rabbit recombinant monoclonal antibody pair in PBS only storage buffer at a concentration of 1 mg/mL, ready for conjugation. Created using Proteintech's proprietary in-house recombinant technology. Recombinant production enables unrivalled batch-to-batch consistency, easy scale-up, and future security of supply.

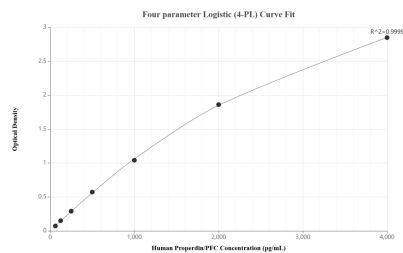
Matched antibody pairs are designed for use in a variety of assays and platforms that require matched antibody pairs.

Antibody use should be optimized for each application and assay.

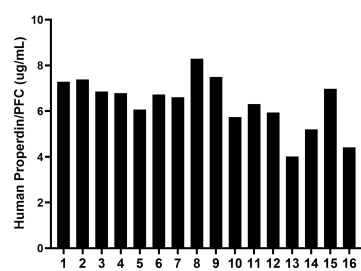
Storage

Storage:
Store at -80°C.
The product is shipped with ice packs. Upon receipt, store it immediately at -80°C
Storage buffer:
PBS only

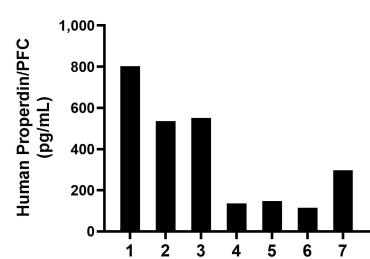
Selected Validation Data



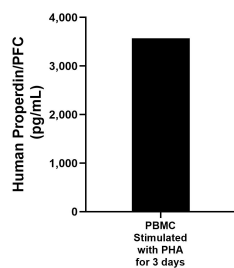
Sandwich ELISA standard curve of MP02228-2, Human Properdin/PFC Recombinant Matched Antibody Pair - PBS only. 85999-5-PBS was coated to a plate as the capture antibody and incubated with serial dilutions of standard Eg2219. 85999-4-PBS was HRP conjugated as the detection antibody. Range: 62.5-4000 pg/mL



Serum of sixteen individual healthy human donors was measured. The Properdin/PFC concentration of detected samples was determined to be 6.4 ug/mL with a range of 4.0-8.3 ug/mL



Urine of seven individual healthy human donors was measured. The Properdin/PFC concentration of detected samples was determined to be 369.6 pg/mL with a range of 115.7-802.5 pg/mL



Human peripheral blood mononuclear cells (PBMC) were cultured stimulated with 10 μ g/mL PHA for 3 days. The mean Properdin/PFC concentration was determined to be 3,569.6 pg/mL in PHA stimulated PBMC supernatant.