

# Properdin/PFC Recombinant Matched Antibody Pair, PBS Only

Catalog Number: **MP02228-1**

## Capture Antibody Information

**Catalog Number:**  
85999-3-PBS  
**Host:**  
Rabbit  
**Isotype:**  
IgG  
**Purification Method:**  
Protein A purification

**Clone ID:**  
250654E4  
**Reactivity:**  
human  
**GenBank:**  
BC015756  
**Immunogen Catalog Number:**  
Eg2219

**Conjugate:**  
Unconjugated  
**Full name:**  
complement factor properdin  
**Gene ID:**  
5199

## Detection Antibody Information

**Catalog Number:**  
85999-2-PBS  
**Host:**  
Rabbit  
**Isotype:**  
IgG  
**Purification Method:**  
Protein A purification

**Clone ID:**  
250654E5  
**Reactivity:**  
human  
**GenBank:**  
BC015756  
**Immunogen Catalog Number:**  
Eg2219

**Conjugate:**  
Unconjugated  
**Full name:**  
complement factor properdin  
**Gene ID:**  
5199

## Applications

**Tested Applications:**  
Cytometric bead array

**Range:**  
0.313-40 ng/mL (Cytometric Bead Array)

**Recommended Dilutions:**  
It is recommended that this reagent should be titrated in each testing system to obtain optimal results.

## Product Information

MP02228-1 targets Properdin/PFC in immunoassays as a matched antibody pair. Validated in Cytometric bead array.

Capture antibody: CFP Recombinant antibody, PBS Only (Capture) 85999-3-PBS (250654E4). 100 µg. Concentration 1 mg/mL.

Detection antibody: CFP Recombinant antibody, PBS Only (Detector) 85999-2-PBS (250654E5). 100 µg. Concentration 1 mg/mL.

Unconjugated rabbit recombinant monoclonal antibody pair in PBS only storage buffer at a concentration of 1 mg/mL, ready for conjugation. Created using Proteintech's proprietary in-house recombinant technology. Recombinant production enables unrivalled batch-to-batch consistency, easy scale-up, and future security of supply.

Matched antibody pairs are designed for use in a variety of assays and platforms that require matched antibody pairs.

Antibody use should be optimized for each application and assay.

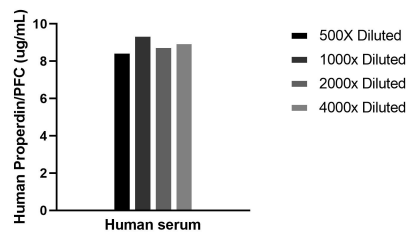
## Storage

**Storage:**  
Store at -80°C.

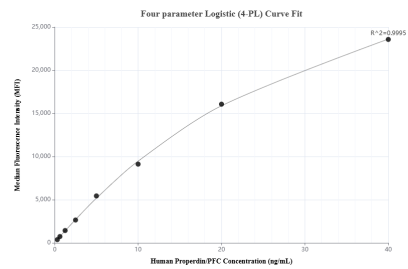
**The product is shipped with ice packs. Upon receipt, store it immediately at -80°C**

**Storage buffer:**  
PBS only

# Selected Validation Data



The mean Properdin/PFC concentration was determined to be 8.6 ug/mL in human serum.



Cytometric bead array standard curve of MP02228-1, Properdin/PFC Recombinant Matched Antibody Pair, PBS Only. Capture antibody: 85999-3-PBS. Detection antibody: 85999-2-PBS. Standard: Eg2219. Range: 0.313-40 ng/mL.