

RBM7 Recombinant Matched Antibody Pair, PBS Only

Catalog Number: **MP02227-2**

Capture Antibody Information

Catalog Number: 85991-5-PBS	Clone ID: 250586E11	Conjugate: Unconjugated
Host: Rabbit	Reactivity: human	Full name: RNA binding motif protein 7
Isotype: IgG	GenBank: BC034381	Gene ID: 10179
Purification Method: Protein A purification	Immunogen Catalog Number: Ag11106	

Detection Antibody Information

Catalog Number: 85991-1-PBS	Clone ID: 250586B1	Conjugate: Unconjugated
Host: Rabbit	Reactivity: human	Full name: RNA binding motif protein 7
Isotype: IgG	GenBank: BC034381	Gene ID: 10179
Purification Method: Protein A purification	Immunogen Catalog Number: Ag11106	

Applications

Tested Applications: Sandwich ELISA	Range: 78.1-5000 pg/mL (Sandwich ELISA)	Recommended Dilutions: It is recommended that this reagent should be titrated in each testing system to obtain optimal results.
---	---	---

Product Information

MP02227-2 targets RBM7 in immunoassays as a matched antibody pair. Validated in Sandwich ELISA.

Capture antibody: RBM7 Recombinant antibody, PBS Only (Capture) 85991-5-PBS (250586E11). 100 µg. Concentration 1 mg/mL.

Detection antibody: RBM7 Recombinant antibody, PBS Only (Detector) 85991-1-PBS (250586B1). 100 µg. Concentration 1 mg/mL.

Unconjugated rabbit recombinant monoclonal antibody pair in PBS only storage buffer at a concentration of 1 mg/mL, ready for conjugation. Created using Proteintech's proprietary in-house recombinant technology. Recombinant production enables unrivalled batch-to-batch consistency, easy scale-up, and future security of supply.

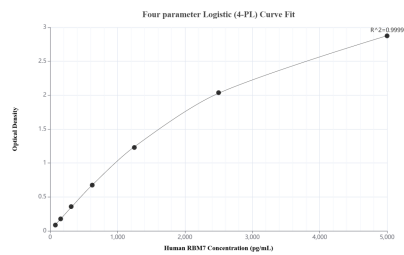
Matched antibody pairs are designed for use in a variety of assays and platforms that require matched antibody pairs.

Antibody use should be optimized for each application and assay.

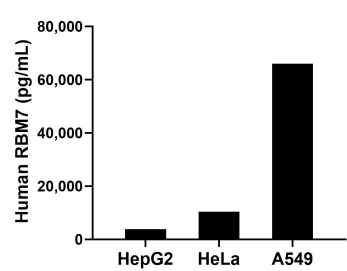
Storage

Storage:
Store at -80°C.
The product is shipped with ice packs. Upon receipt, store it immediately at -80°C
Storage buffer:
PBS only

Selected Validation Data



Sandwich ELISA standard curve of MP02227-2, Human RBM7 Recombinant Matched Antibody Pair - PBS only. 85991-5-PBS was coated to a plate as the capture antibody and incubated with serial dilutions of standard Ag11106. 85991-1-PBS was HRP conjugated as the detection antibody. Range: 78.1-5000 pg/mL.



The mean RBM7 concentration was determined to be 3,857.0 pg/mL in HepG2 cell extract based on a 1.8 mg/mL extract load, 10,443.6 pg/mL in HeLa cell extract based on a 1.3 mg/mL extract load and 65,958.2 pg/mL in A549 cell extract based on a 3.1 mg/mL extract load.