

RBM7 Recombinant Matched Antibody Pair, PBS Only

Catalog Number: **MP02227-1**

Capture Antibody Information

Catalog Number: 85991-3-PBS	Clone ID: 250586G7	Conjugate: Unconjugated
Host: Rabbit	Reactivity: human	Full name: RNA binding motif protein 7
Isotype: IgG	GenBank: BC034381	Gene ID: 10179
Purification Method: Protein A purification	Immunogen Catalog Number: Ag11106	

Detection Antibody Information

Catalog Number: 85991-2-PBS	Clone ID: 250586E2	Conjugate: Unconjugated
Host: Rabbit	Reactivity: human	Full name: RNA binding motif protein 7
Isotype: IgG	GenBank: BC034381	Gene ID: 10179
Purification Method: Protein A purification	Immunogen Catalog Number: Ag11106	

Applications

Tested Applications: Cytometric bead array	Range: 1.563-200 ng/mL (Cytometric Bead Array)	Recommended Dilutions: It is recommended that this reagent should be titrated in each testing system to obtain optimal results.
--	--	---

Product Information

MP02227-1 targets RBM7 in immunoassays as a matched antibody pair. Validated in Cytometric bead array.

Capture antibody: RBM7 Recombinant antibody, PBS Only (Capture) 85991-3-PBS (250586G7). 100 µg. Concentration 1 mg/mL.

Detection antibody: RBM7 Recombinant antibody, PBS Only (Detector) 85991-2-PBS (250586E2). 100 µg. Concentration 1 mg/mL.

Unconjugated rabbit recombinant monoclonal antibody pair in PBS only storage buffer at a concentration of 1 mg/mL, ready for conjugation. Created using Proteintech's proprietary in-house recombinant technology. Recombinant production enables unrivalled batch-to-batch consistency, easy scale-up, and future security of supply.

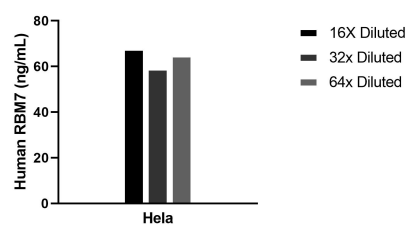
Matched antibody pairs are designed for use in a variety of assays and platforms that require matched antibody pairs.

Antibody use should be optimized for each application and assay.

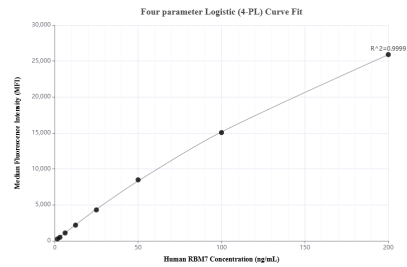
Storage

Storage:
Store at -80°C.
The product is shipped with ice packs. Upon receipt, store it immediately at -80°C
Storage buffer:
PBS only

Selected Validation Data



The mean RBM7 concentration was determined to be 63.8 ng/mL in HeLa cell extract based on a 1.3 mg/mL extract load.



Cytometric bead array standard curve of MP02227-1, RBM7 Recombinant Matched Antibody Pair, PBS Only. Capture antibody: 85991-3-PBS. Detection antibody: 85991-2-PBS. Standard: Ag11106. Range: 1.563-200 ng/mL.