

SMARCC1 Recombinant Matched Antibody Pair, PBS Only

Catalog Number: **MP02222-2**

Capture Antibody Information

Catalog Number:
86015-3-PBS
Host:
Rabbit
Isotype:
IgG
Purification Method:
Protein A purification

Clone ID:
250455D11
Reactivity:
human
GenBank:
BC050564
Immunogen Catalog Number:
Ag12109

Conjugate:
Unconjugated
Full name:
SWI/SNF related, matrix associated, actin dependent regulator of chromatin, subfamily c, member 1
Gene ID:
6599

Detection Antibody Information

Catalog Number:
86015-2-PBS
Host:
Rabbit
Isotype:
IgG
Purification Method:
Protein A purification

Clone ID:
250455C8
Reactivity:
human
GenBank:
BC050564
Immunogen Catalog Number:
Ag12109

Conjugate:
Unconjugated
Full name:
SWI/SNF related, matrix associated, actin dependent regulator of chromatin, subfamily c, member 1
Gene ID:
6599

Applications

Tested Applications:
Sandwich ELISA

Range:
0.156-10 ng/mL (Sandwich ELISA)

Recommended Dilutions:
It is recommended that this reagent should be titrated in each testing system to obtain optimal results.

Product Information

MP02222-2 targets SMARCC1 in immunoassays as a matched antibody pair. Validated in Sandwich ELISA.

Capture antibody: SMARCC1 Recombinant antibody, PBS Only (Capture) 86015-3-PBS (250455D11). 100 µg. Concentration 1 mg/mL.

Detection antibody: SMARCC1 Recombinant antibody, PBS Only (Detector) 86015-2-PBS (250455C8). 100 µg. Concentration 1 mg/mL.

Unconjugated rabbit recombinant monoclonal antibody pair in PBS only storage buffer at a concentration of 1 mg/mL, ready for conjugation. Created using Proteintech's proprietary in-house recombinant technology. Recombinant production enables unrivalled batch-to-batch consistency, easy scale-up, and future security of supply.

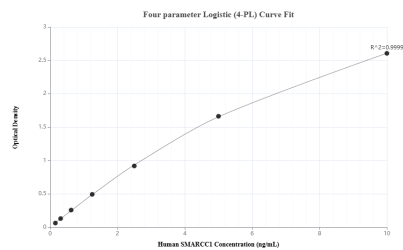
Matched antibody pairs are designed for use in a variety of assays and platforms that require matched antibody pairs.

Antibody use should be optimized for each application and assay.

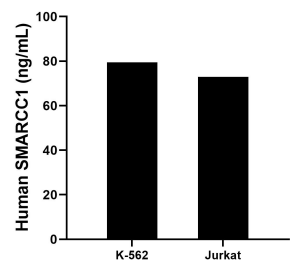
Storage

Storage:
Store at -80°C.
The product is shipped with ice packs. Upon receipt, store it immediately at -80°C
Storage buffer:
PBS only

Selected Validation Data



Sandwich ELISA standard curve of MP02222-2, Human SMARCC1 Recombinant Matched Antibody Pair - PBS only. 86015-3-PBS was coated to a plate as the capture antibody and incubated with serial dilutions of standard Ag12109. 86015-2-PBS was HRP conjugated as the detection antibody. Range: 0.156-10 ng/mL



The mean SMARCC1 concentration was determined to be 79.50 ng/mL in K-562 cell extract based on a 3.0 mg/mL extract load and 72.90 ng/mL in Jurkat cell extract based on a 2.2 mg/mL extract load.