

NMDAR1/GRIN1 Recombinant Matched Antibody Pair, PBS Only

Catalog Number: **MP02220-1**

Capture Antibody Information

Catalog Number:
85973-2-PBS
Host:
Rabbit
Isotype:
IgG
Purification Method:
Protein A purification

Clone ID:
250535B7
Reactivity:
human
GenBank:
NM_000832
Immunogen Catalog Number:
Ag26093

Conjugate:
Unconjugated
Full name:
glutamate receptor, ionotropic, N-methyl D-aspartate 1
Gene ID:
2902

Detection Antibody Information

Catalog Number:
85973-1-PBS
Host:
Rabbit
Isotype:
IgG
Purification Method:
Protein A purification

Clone ID:
250535A12
Reactivity:
human
GenBank:
NM_000832
Immunogen Catalog Number:
Ag26093

Conjugate:
Unconjugated
Full name:
glutamate receptor, ionotropic, N-methyl D-aspartate 1
Gene ID:
2902

Applications

Tested Applications:
Sandwich ELISA

Range:
78.1-5000 pg/mL (Sandwich ELISA)

Recommended Dilutions:
It is recommended that this reagent should be titrated in each testing system to obtain optimal results.

Product Information

MP02220-1 targets NMDAR1/GRIN1 in immunoassays as a matched antibody pair. Validated in Sandwich ELISA.

Capture antibody: NMDAR1 Recombinant antibody, PBS Only (Capture) 85973-2-PBS (250535B7). 100 µg. Concentration 1 mg/mL.

Detection antibody: NMDAR1 Recombinant antibody, PBS Only (Detector) 85973-1-PBS (250535A12). 100 µg. Concentration 1 mg/mL.

Unconjugated rabbit recombinant monoclonal antibody pair in PBS only storage buffer at a concentration of 1 mg/mL, ready for conjugation. Created using Proteintech's proprietary in-house recombinant technology. Recombinant production enables unrivalled batch-to-batch consistency, easy scale-up, and future security of supply.

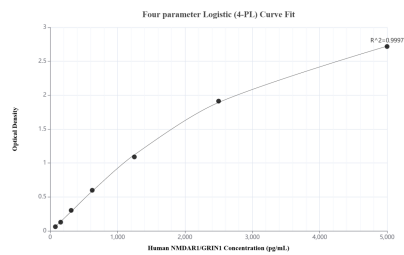
Matched antibody pairs are designed for use in a variety of assays and platforms that require matched antibody pairs.

Antibody use should be optimized for each application and assay.

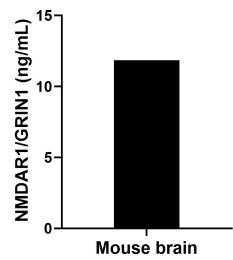
Storage

Storage:
Store at -80°C.
The product is shipped with ice packs. Upon receipt, store it immediately at -80°C
Storage buffer:
PBS only

Selected Validation Data



Sandwich ELISA standard curve of MP02220-1, Human NMDAR1/GRIN1 Recombinant Matched Antibody Pair - PBS only. 85973-2-PBS was coated to a plate as the capture antibody and incubated with serial dilutions of standard Ag26093. 85973-1-PBS was HRP conjugated as the detection antibody. Range: 78.1-5000 pg/mL.



The mean NMDAR1/GRIN1 concentration was determined to be 11.8 ng/mL in mouse brain extract based on a 2.2 mg/mL extract load.