

# Cyclophilin E Recombinant Matched Antibody Pair, PBS Only

Catalog Number: **MP02219-1**

## Capture Antibody Information

Catalog Number:  
85952-3-PBS  
Host:  
Rabbit  
Isotype:  
IgG  
Purification Method:  
Protein A purification

Clone ID:  
250296B6  
Reactivity:  
human  
GenBank:  
BC004898  
Immunogen Catalog Number:  
Ag7603

Conjugate:  
Unconjugated  
Full name:  
peptidylprolyl isomerase E  
(cyclophilin E)  
Gene ID:  
10450

## Detection Antibody Information

Catalog Number:  
85952-2-PBS  
Host:  
Rabbit  
Isotype:  
IgG  
Purification Method:  
Protein A purification

Clone ID:  
250296E4  
Reactivity:  
human  
GenBank:  
BC004898  
Immunogen Catalog Number:  
Ag7603

Conjugate:  
Unconjugated  
Full name:  
peptidylprolyl isomerase E  
(cyclophilin E)  
Gene ID:  
10450

## Applications

Tested Applications:  
Sandwich ELISA

Range:  
46.9-3000 pg/mL (Sandwich ELISA)

Recommended Dilutions:  
It is recommended that this reagent should be titrated in each testing system to obtain optimal results.

## Product Information

MP02219-1 targets Cyclophilin E in immunoassays as a matched antibody pair. Validated in Sandwich ELISA.

Capture antibody: PPIE Recombinant antibody, PBS Only (Capture) 85952-3-PBS (250296B6). 100 µg. Concentration 1 mg/mL.

Detection antibody: PPIE Recombinant antibody, PBS Only (Detector) 85952-2-PBS (250296E4). 100 µg. Concentration 1 mg/mL.

Unconjugated rabbit recombinant monoclonal antibody pair in PBS only storage buffer at a concentration of 1 mg/mL, ready for conjugation. Created using Proteintech's proprietary in-house recombinant technology. Recombinant production enables unrivalled batch-to-batch consistency, easy scale-up, and future security of supply.

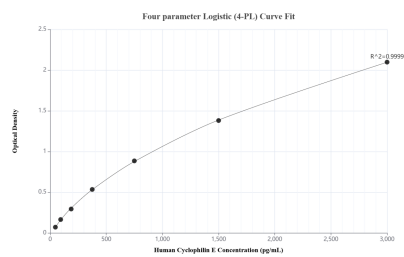
Matched antibody pairs are designed for use in a variety of assays and platforms that require matched antibody pairs.

Antibody use should be optimized for each application and assay.

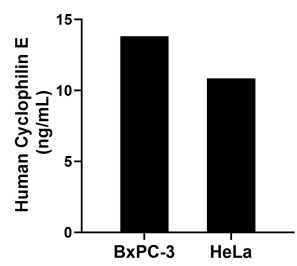
## Storage

Storage:  
Store at -80°C.  
**The product is shipped with ice packs. Upon receipt, store it immediately at -80°C**  
Storage buffer:  
PBS only

## Selected Validation Data



Sandwich ELISA standard curve of MP02219-1, Human Cyclophilin E Recombinant Matched Antibody Pair - PBS only. 85952-3-PBS was coated to a plate as the capture antibody and incubated with serial dilutions of standard Ag7603. 85952-2-PBS was HRP conjugated as the detection antibody. Range: 46.9-3000 pg/mL.



The mean Cyclophilin E concentration was determined to be 13.81 ng/mL in BxPC-3 cell extract based on a 2.00 mg/mL extract load and 10.85 ng/mL in HeLa cell extract based on a 1.30 mg/mL extract load.