

# CCL27 Recombinant Matched Antibody Pair, PBS Only

Catalog Number: **MP02216-1**

## Capture Antibody Information

**Catalog Number:**  
86007-2-PBS  
**Host:**  
Rabbit  
**Isotype:**  
IgG  
**Purification Method:**  
Protein A purification

**Clone ID:**  
242991B1  
**Reactivity:**  
human  
**GenBank:**  
NM\_006664  
**Immunogen Catalog Number:**  
Eg2461

**Conjugate:**  
Unconjugated  
**Full name:**  
chemokine (C-C motif) ligand 27  
**Gene ID:**  
10850

## Detection Antibody Information

**Catalog Number:**  
86007-1-PBS  
**Host:**  
Rabbit  
**Isotype:**  
IgG  
**Purification Method:**  
Protein A purification

**Clone ID:**  
242991C2  
**Reactivity:**  
human  
**GenBank:**  
NM\_006664  
**Immunogen Catalog Number:**  
Eg2461

**Conjugate:**  
Unconjugated  
**Full name:**  
chemokine (C-C motif) ligand 27  
**Gene ID:**  
10850

## Applications

**Tested Applications:**  
Sandwich ELISA

**Range:**  
78.1-5000 pg/mL (Sandwich ELISA)

**Recommended Dilutions:**  
It is recommended that this reagent should be titrated in each testing system to obtain optimal results.

## Product Information

MP02216-1 targets CCL27 in immunoassays as a matched antibody pair. Validated in Sandwich ELISA.

Capture antibody: CCL27 Recombinant antibody, PBS Only (Capture) 86007-2-PBS (242991B1). 100 µg. Concentration 1 mg/mL.

Detection antibody: CCL27 Recombinant antibody, PBS Only (Detector) 86007-1-PBS (242991C2). 100 µg. Concentration 1 mg/mL.

Unconjugated rabbit recombinant monoclonal antibody pair in PBS only storage buffer at a concentration of 1 mg/mL, ready for conjugation. Created using Proteintech's proprietary in-house recombinant technology. Recombinant production enables unrivalled batch-to-batch consistency, easy scale-up, and future security of supply.

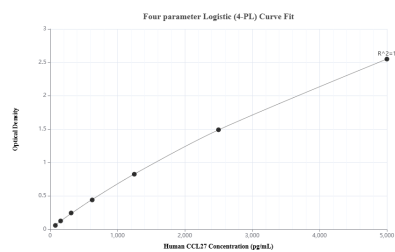
Matched antibody pairs are designed for use in a variety of assays and platforms that require matched antibody pairs.

Antibody use should be optimized for each application and assay.

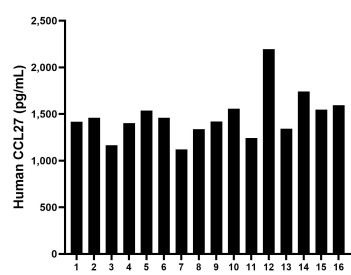
## Storage

**Storage:**  
Store at -80°C.  
**The product is shipped with ice packs. Upon receipt, store it immediately at -80°C**  
**Storage buffer:**  
PBS only

## Selected Validation Data



Sandwich ELISA standard curve of MP02216-1, Human CCL27 Recombinant Matched Antibody Pair - PBS only. 86007-2-PBS was coated to a plate as the capture antibody and incubated with serial dilutions of standard Eg2461. 86007-1-PBS was HRP conjugated as the detection antibody. Range: 78.1-5000 pg/mL



Serum of sixteen individual healthy human donors was measured. The human CCL27 concentration of detected samples was determined to be 1,471.41 pg/mL with a range of 1,120.1 - 2,195.4 pg/mL.