

SERPINA12/Vaspin Recombinant Matched Antibody Pair, PBS Only

Catalog Number: **MP02213-1**

Capture Antibody Information

Catalog Number:
85908-2-PBS
Host:
Rabbit
Isotype:
IgG
Purification Method:
Protein A purification

Clone ID:
250315C11
Reactivity:
human
GenBank:
NM_001304461.1
Immunogen Catalog Number:
Eg2842

Conjugate:
Unconjugated
Full name:
serpin peptidase inhibitor, clade A (alpha-1 antiproteinase, antitrypsin), member 12
Gene ID:
145264

Detection Antibody Information

Catalog Number:
85908-3-PBS
Host:
Rabbit
Isotype:
IgG
Purification Method:
Protein A purification

Clone ID:
250315F8
Reactivity:
human
GenBank:
NM_001304461.1
Immunogen Catalog Number:
Eg2842

Conjugate:
Unconjugated
Full name:
serpin peptidase inhibitor, clade A (alpha-1 antiproteinase, antitrypsin), member 12
Gene ID:
145264

Applications

Tested Applications:
Sandwich ELISA

Range:
31.3-2000 pg/mL (Sandwich ELISA)

Recommended Dilutions:
It is recommended that this reagent should be titrated in each testing system to obtain optimal results.

Product Information

MP02213-1 targets SERPINA12/Vaspin in immunoassays as a matched antibody pair. Validated in Sandwich ELISA.

Capture antibody: SERPINA12/Vaspin Recombinant antibody, PBS Only (Capture) 85908-2-PBS (250315C11). 100 µg. Concentration 1 mg/mL.

Detection antibody: SERPINA12/Vaspin Recombinant antibody, PBS Only (Detector) 85908-3-PBS (250315F8). 100 µg. Concentration 1 mg/mL.

Unconjugated rabbit recombinant monoclonal antibody pair in PBS only storage buffer at a concentration of 1 mg/mL, ready for conjugation. Created using Proteintech's proprietary in-house recombinant technology. Recombinant production enables unrivalled batch-to-batch consistency, easy scale-up, and future security of supply.

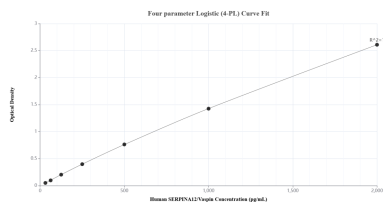
Matched antibody pairs are designed for use in a variety of assays and platforms that require matched antibody pairs.

Antibody use should be optimized for each application and assay.

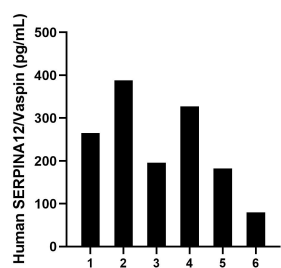
Storage

Storage:
Store at -80°C.
The product is shipped with ice packs. Upon receipt, store it immediately at -80°C
Storage buffer:
PBS only

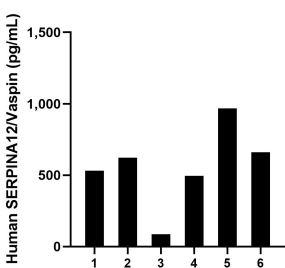
Selected Validation Data



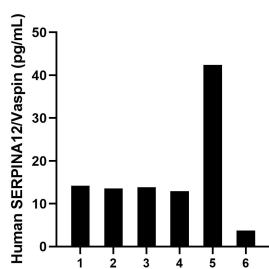
Sandwich ELISA standard curve of MP02213-1, Human SERPINA12/Vaspin Recombinant Matched Antibody Pair - PBS only. 85908-2-PBS was coated to a plate as the capture antibody and incubated with serial dilutions of standard Eg2842. 85908-3-PBS was HRP conjugated as the detection antibody. Range: 31.3-2000 pg/mL



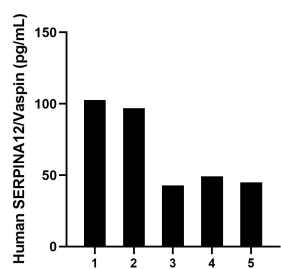
Serum of six individual healthy human donors was measured. The SERPINA12/Vaspin concentration of detected samples was determined to be 239.7 pg/mL with a range of 79.8-388.0 pg/mL.



Saliva of six individual healthy human donors was measured. The SERPINA12/Vaspin concentration of detected samples was determined to be 560.7 pg/mL with a range of 87.5-968.1 pg/mL.



Urine of six individual healthy human donors was measured. The SERPINA12/Vaspin concentration of detected samples was determined to be 16.8 pg/mL with a range of 3.7-42.4 pg/mL.



Human milk of five individual healthy human donors was measured. The SERPINA12/Vaspin concentration of detected samples was determined to be 67.3 pg/mL with a range of 42.8-102.6 pg/mL.