

NUMB Recombinant Matched Antibody Pair, PBS Only

Catalog Number: **MP02209-2**

Capture Antibody Information

Catalog Number: 85939-3-PBS	Clone ID: 250417D8	Conjugate: Unconjugated
Host: Rabbit	Reactivity: human	Full name: numb homolog (Drosophila)
Isotype: IgG	GenBank: NM_001005743	Gene ID: 8650
Purification Method: Protein A purification	Immunogen Catalog Number: Ag31553	

Detection Antibody Information

Catalog Number: 85939-5-PBS	Clone ID: 250417D2	Conjugate: Unconjugated
Host: Rabbit	Reactivity: human	Full name: numb homolog (Drosophila)
Isotype: IgG	GenBank: NM_001005743	Gene ID: 8650
Purification Method: Protein A purification	Immunogen Catalog Number: Ag31553	

Applications

Tested Applications: Sandwich ELISA	Range: 0.313-20 ng/mL (Sandwich ELISA)	Recommended Dilutions: It is recommended that this reagent should be titrated in each testing system to obtain optimal results.
---	--	---

Product Information

MP02209-2 targets NUMB in immunoassays as a matched antibody pair. Validated in Sandwich ELISA.

Capture antibody: NUMB Recombinant antibody, PBS Only (Capture) 85939-3-PBS (250417D8). 100 µg. Concentration 1 mg/mL.

Detection antibody: NUMB Recombinant antibody, PBS Only (Detector) 85939-5-PBS (250417D2). 100 µg. Concentration 1 mg/mL.

Unconjugated rabbit recombinant monoclonal antibody pair in PBS only storage buffer at a concentration of 1 mg/mL, ready for conjugation. Created using Proteintech's proprietary in-house recombinant technology. Recombinant production enables unrivalled batch-to-batch consistency, easy scale-up, and future security of supply.

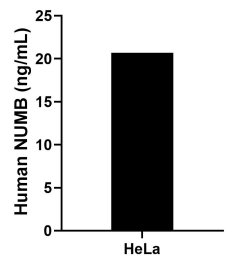
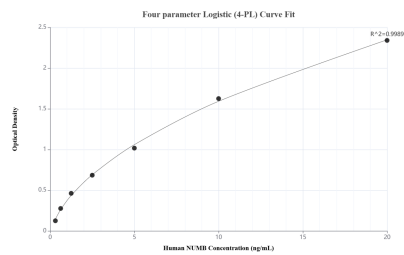
Matched antibody pairs are designed for use in a variety of assays and platforms that require matched antibody pairs.

Antibody use should be optimized for each application and assay.

Storage

Storage:
Store at -80°C.
The product is shipped with ice packs. Upon receipt, store it immediately at -80°C
Storage buffer:
PBS only

Selected Validation Data



Sandwich ELISA standard curve of MP02209-2, Human NUMB Recombinant Matched Antibody Pair - PBS only. 85939-3-PBS was coated to a plate as the capture antibody and incubated with serial dilutions of standard Ag31553. 85939-5-PBS was HRP conjugated as the detection antibody. Range: 0.313-20 ng/mL

The mean NUMB concentration was determined to be 20.70 ng/mL in HeLa cell extract based on a 1.30 mg/mL extract load.