

NUMB Recombinant Matched Antibody Pair, PBS Only

Catalog Number: MP02209-1

Capture Antibody Information

Catalog Number: 85939-3-PBS	Clone ID: 250417D8	Conjugate: Unconjugated
Host: Rabbit	Reactivity: human	Full name: numb homolog (Drosophila)
Isotype: IgG	GenBank: NM_001005743	Gene ID: 8650
Purification Method: Protein A purification	Immunogen Catalog Number: Ag31553	

Detection Antibody Information

Catalog Number: 85939-2-PBS	Clone ID: 250417F7	Conjugate: Unconjugated
Host: Rabbit	Reactivity: human	Full name: numb homolog (Drosophila)
Isotype: IgG	GenBank: NM_001005743	Gene ID: 8650
Purification Method: Protein A purification	Immunogen Catalog Number: Ag31553	

Applications

Tested Applications: Cytometric bead array	Range: 0.625-80 ng/mL (Cytometric Bead Array)	Recommended Dilutions: It is recommended that this reagent should be titrated in each testing system to obtain optimal results.
--	---	---

Product Information

MP02209-1 targets NUMB in immunoassays as a matched antibody pair. Validated in Cytometric bead array.

Capture antibody: NUMB Recombinant antibody, PBS Only (Capture) 85939-3-PBS (250417D8). 100 µg. Concentration 1 mg/mL.

Detection antibody: NUMB Recombinant antibody, PBS Only (Detector) 85939-2-PBS (250417F7). 100 µg. Concentration 1 mg/mL.

Unconjugated rabbit recombinant monoclonal antibody pair in PBS only storage buffer at a concentration of 1 mg/mL, ready for conjugation. Created using Proteintech's proprietary in-house recombinant technology. Recombinant production enables unrivalled batch-to-batch consistency, easy scale-up, and future security of supply.

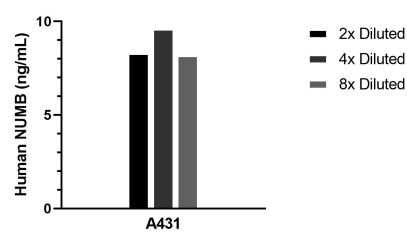
Matched antibody pairs are designed for use in a variety of assays and platforms that require matched antibody pairs.

Antibody use should be optimized for each application and assay.

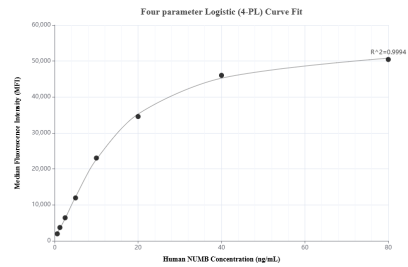
Storage

Storage:
Store at -80°C.
The product is shipped with ice packs. Upon receipt, store it immediately at -80°C
Storage buffer:
PBS only

Selected Validation Data



The mean NUMB concentration was determined to be 8.7 ng/mL in A431 cell extract based on a 1.5 mg/mL extract load.



Cytometric bead array standard curve of MP02209-1, NUMB Recombinant Matched Antibody Pair, PBS Only. Capture antibody: 85939-3-PBS. Detection antibody: 85939-2-PBS. Standard: Ag31553. Range: 0.625-80 ng/mL.