

CD58 Recombinant Matched Antibody Pair, PBS Only

Catalog Number: MP02208-1

Capture Antibody Information

Catalog Number:
85950-1-PBS
Host:
Rabbit
Isotype:
IgG
Purification Method:
Protein A purification

Clone ID:
250250H5
Reactivity:
human
GenBank:
BC005930
Immunogen Catalog Number:
Eg4236

Conjugate:
Unconjugated
Full name:
CD58 molecule
Gene ID:
965

Detection Antibody Information

Catalog Number:
85950-2-PBS
Host:
Rabbit
Isotype:
IgG
Purification Method:
Protein A purification

Clone ID:
250250A8
Reactivity:
human
GenBank:
BC005930
Immunogen Catalog Number:
Eg4236

Conjugate:
Unconjugated
Full name:
CD58 molecule
Gene ID:
965

Applications

Tested Applications:
Cytometric bead array

Range:
0.313-40 ng/mL (Cytometric Bead Array)

Recommended Dilutions:
It is recommended that this reagent should be titrated in each testing system to obtain optimal results.

Product Information

MP02208-1 targets CD58 in immunoassays as a matched antibody pair. Validated in Cytometric bead array.

Capture antibody: CD58 Recombinant antibody, PBS Only (Capture) 85950-1-PBS (250250H5). 100 µg. Concentration 1 mg/mL.

Detection antibody: CD58 Recombinant antibody, PBS Only (Detector) 85950-2-PBS (250250A8). 100 µg. Concentration 1 mg/mL.

Unconjugated rabbit recombinant monoclonal antibody pair in PBS only storage buffer at a concentration of 1 mg/mL, ready for conjugation. Created using Proteintech's proprietary in-house recombinant technology. Recombinant production enables unrivalled batch-to-batch consistency, easy scale-up, and future security of supply.

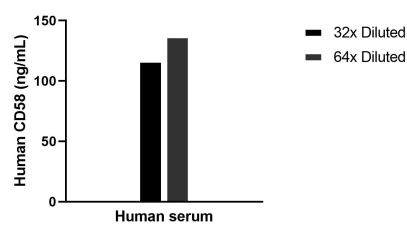
Matched antibody pairs are designed for use in a variety of assays and platforms that require matched antibody pairs.

Antibody use should be optimized for each application and assay.

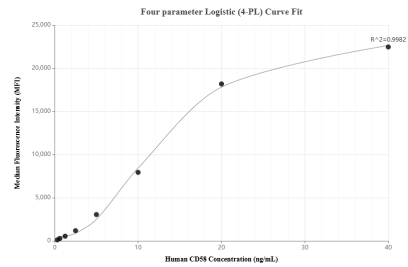
Storage

Storage:
Store at -80°C.
The product is shipped with ice packs. Upon receipt, store it immediately at -80°C
Storage buffer:
PBS only

Selected Validation Data



The mean CD58 concentration was determined to be 126.7 ng/mL in human serum.



Cytometric bead array standard curve of MP02208-1, CD58 Recombinant Matched Antibody Pair, PBS Only. Capture antibody: 85950-1-PBS. Detection antibody: 85950-2-PBS. Standard: Eg4236. Range: 0.313-40 ng/mL.