

Neutrophil Elastase Recombinant Matched Antibody Pair, PBS Only

Catalog Number: **MP02206-2**

Capture Antibody Information

Catalog Number: 85965-4-PBS	Clone ID: 250346E4	Conjugate: Unconjugated
Host: Rabbit	Reactivity: human	Full name: elastase 2, neutrophil
Isotype: IgG	GenBank: NM_001972.4	Gene ID: 1991
Purification Method: Protein A purification	Immunogen Catalog Number: Eg3192	

Detection Antibody Information

Catalog Number: 85965-2-PBS	Clone ID: 250346D5	Conjugate: Unconjugated
Host: Rabbit	Reactivity: human	Full name: elastase 2, neutrophil
Isotype: IgG	GenBank: NM_001972.4	Gene ID: 1991
Purification Method: Protein A purification	Immunogen Catalog Number: Eg3192	

Applications

Tested Applications: Sandwich ELISA	Range: 78.1-5000 pg/mL (Sandwich ELISA)	Recommended Dilutions: It is recommended that this reagent should be titrated in each testing system to obtain optimal results.
---	---	---

Product Information

MP02206-2 targets Neutrophil Elastase in immunoassays as a matched antibody pair. Validated in Sandwich ELISA.

Capture antibody: ELA2 Recombinant antibody, PBS Only (Capture) 85965-4-PBS (250346E4). 100 µg. Concentration 1 mg/mL.

Detection antibody: ELA2 Recombinant antibody, PBS Only (Capture/Detector) 85965-2-PBS (250346D5). 100 µg. Concentration 1 mg/mL.

Unconjugated rabbit recombinant monoclonal antibody pair in PBS only storage buffer at a concentration of 1 mg/mL, ready for conjugation. Created using Proteintech's proprietary in-house recombinant technology. Recombinant production enables unrivalled batch-to-batch consistency, easy scale-up, and future security of supply.

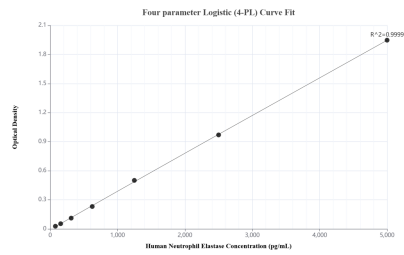
Matched antibody pairs are designed for use in a variety of assays and platforms that require matched antibody pairs.

Antibody use should be optimized for each application and assay.

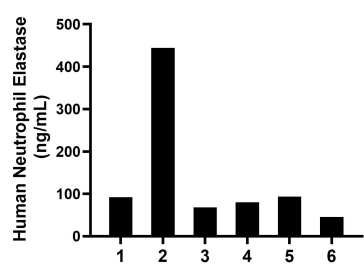
Storage

Storage:
Store at -80°C.
The product is shipped with ice packs. Upon receipt, store it immediately at -80°C
Storage buffer:
PBS only

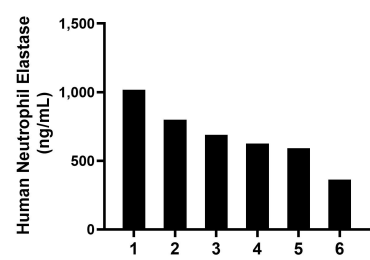
Selected Validation Data



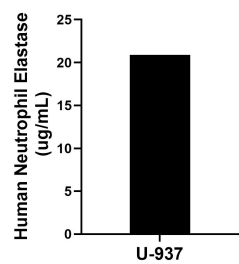
Sandwich ELISA standard curve of MP02206-2, Human Neutrophil Elastase Recombinant Matched Antibody Pair - PBS only. 85965-4-PBS was coated to a plate as the capture antibody and incubated with serial dilutions of standard Eg3192. 85965-2-PBS was HRP conjugated as the detection antibody. Range: 78.1-5000 pg/mL



Serum of six individual healthy human donors was measured. The Neutrophil Elastase concentration of detected samples was determined to be 137.2 ng/mL with a range of 45.9-444.0 ng/mL



Saliva of six individual healthy human donors was measured. The Neutrophil Elastase concentration of detected samples was determined to be 681.2 ng/mL with a range of 363.2-1,018.3 ng/mL



The mean Neutrophil Elastase concentration was determined to be 20.9 ug/mL in U-937 cell extract based on a 2.6 mg/mL extract load.